



BALL VALVE ½" 1000WOG

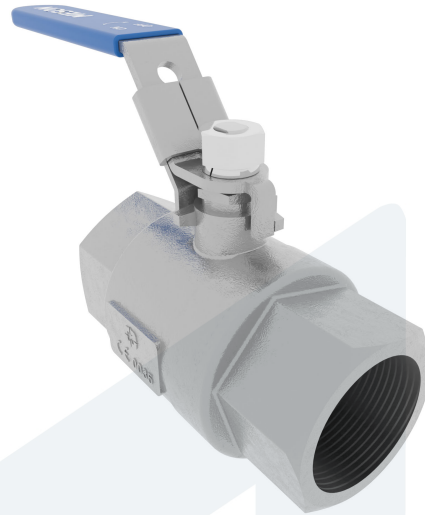
20-00000164
442095

Straight type

DESCRIPTION: Two piece, full bore, Stainless Steel body ball valve with Stainless Steel ball and PTFE seat. NPT female threaded ends.

STANDARD & DESIGN:

| | |
|----------------------|----------------------|
| End Standard | ASME B1.20.1 |
| Inspection Standard | API 598 |
| Min temperature | -10°C |
| Max temperature | +150°C |
| Throughput Direction | Straight |
| Execution | Full Bore |
| End Type | Threaded |
| Design Code | EN 12516-2 |
| Standard | DIN |
| Material Seat | PTFE |
| Material Body | Stainless Steel, 316 |
| Sub Category | BALL |
| Item Number | 20-00000164 |
| Category | Valve |



| No | Part | Material | Code | Application |
|----|--------|--------------------------------|------|-------------------------------|
| 1 | Body | Stainless Steel | CF8M | Air |
| 2 | Cap | Stainless Steel | CF8M | Boiler feedwater |
| 3 | Ball | Stainless Steel | CF8M | Cargo oil |
| 4 | Seat | PTFE | | Condensate |
| 5 | Stem | Stainless Steel | 316 | Corrosive fluids |
| 6 | Handle | Stainless Steel, Plastic Cover | 304 | Flammable hydraulic oil |
| | | | | Fuel oil |
| | | | | Gas |
| | | | | Lubricating oil |
| | | | | Non-flammable hydraulic fluid |
| | | | | Sea water |
| | | | | Water |

| DN | Pressure Rating Id | L | Kg | L1 | Inch | H | Ø A |
|----|--------------------|----|-----|-----|------|----|-----|
| 15 | 1000 | 57 | 0.3 | 115 | 1/2" | 58 | 15 |

