



# BALL VALVE 3/4" 1000WOG

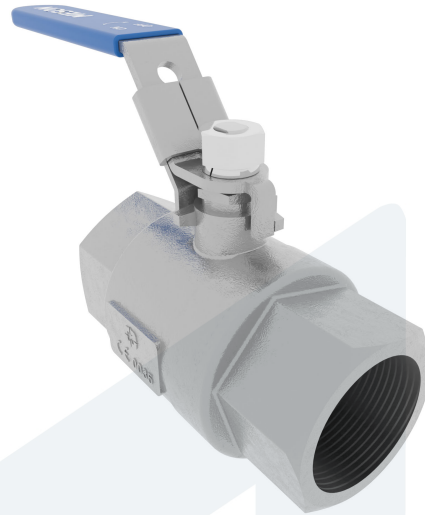
20-00000169  
442095

Straight type

**DESCRIPTION:** Two piece, full bore, Stainless Steel body ball valve with Stainless Steel ball and PTFE seat. NPT female threaded ends.

**STANDARD & DESIGN:**

End Standard	ASME B1.20.1
Inspection Standard	API 598
Min temperature	-10°C
Max temperature	+150°C
Throughput Direction	Straight
Execution	Full Bore
End Type	Threaded
Design Code	EN 12516-2
Standard	DIN
Material Seat	PTFE
Material Body	Stainless Steel, 316
Sub Category	BALL
Item Number	20-00000169
Category	Valve



No	Part	Material	Code	Application
1	Body	Stainless Steel	CF8M	Air
2	Cap	Stainless Steel	CF8M	Boiler feedwater
3	Ball	Stainless Steel	CF8M	Cargo oil
4	Seat	PTFE		Condensate
5	Stem	Stainless Steel	316	Corrosive fluids
6	Handle	Stainless Steel, Plastic Cover	304	Flammable hydraulic oil
				Fuel oil
				Gas
				Lubricating oil
				Non-flammable hydraulic fluid
				Sea water
				Water

DN	Pressure Rating Id	L	Kg	L1	Inch	H	Ø A
20	1000	68	0.5	115	3/4"	61	20

