



BALL VALVE DN40 PN16

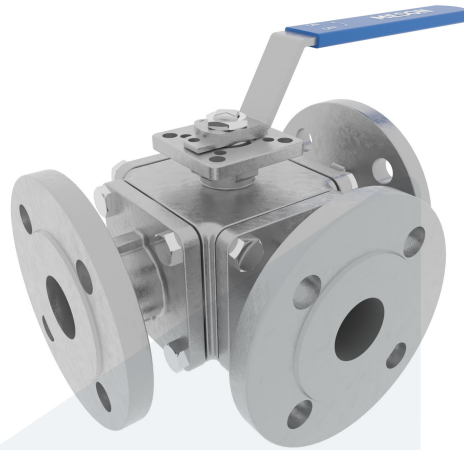
20-00000828
448192

3-way type - T-port - with direct mounting pad

DESCRIPTION: 3-way, full bore, Stainless Steel body ball valve with Stainless Steel ball and PTFE seat. Raised face flanges. With direct mounting pad.

STANDARD & DESIGN:

| | |
|----------------------|----------------------|
| End Standard | DIN 2633 |
| Inspection Standard | API 598 |
| Remark | Connection: PN16 |
| Min temperature | -25°C |
| Top Flange Standard | ISO 5211 - F05/F07 |
| Max temperature | +230°C |
| Throughput Direction | 3-way |
| Execution | Full Bore |
| Variant | T-port |
| End Type | Flanged |
| Design Code | ASME B16.34 |
| Standard | DIN |
| Material Seat | PTFE |
| Material Body | Stainless Steel, 316 |
| Sub Category | BALL |
| Item Number | 20-00000828 |
| Category | Valve |



| No | Part | Material | Code | Application |
|----|--------|------------------------------|---------------|-------------------------------|
| 1 | Body | Stainless Steel | A351 Gr. CF8M | Air |
| 2 | Cap | Stainless Steel | A351 Gr. CF8M | Boiler feedwater |
| 3 | Ball | Stainless Steel | SS 316 | Cargo oil |
| 4 | Seat | PTFE | | Condensate |
| 5 | Stem | Stainless Steel | SS 316 | Corrosive fluids |
| 6 | Handle | Stainless Steel, Vinyl Cover | SS 304 | Flammable hydraulic oil |
| | | | | Fuel oil |
| | | | | Gas |
| | | | | Lubricating oil |
| | | | | Non-flammable hydraulic fluid |
| | | | | Sea water |
| | | | | Water |

| DN | Pressure Rating Id | nxdd | Hcd | Ø D | L | Kg | L1 | H | H1 | Ø A | H2 | S | H3 |
|----|--------------------|------|-----|-----|-----|------|-----|-----|----|-----|----|----|------|
| 40 | 16 | 4x18 | 110 | 150 | 234 | 14.5 | 205 | 108 | 74 | 38 | 18 | 14 | 17.5 |

