



BALL VALVE 4" 1000WOG

Straight type

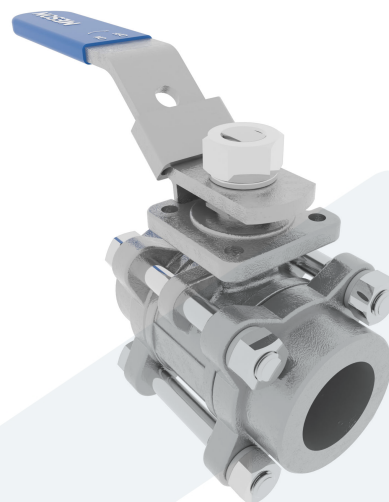
20-00001046
440595

DESCRIPTION: Three piece, full bore, Stainless Steel body ball valve with Stainless Steel ball and PTFE seat. Butt welded ends. With non-direct mounting pad.

STANDARD & DESIGN:

Top Flange Standard
Throughput Direction
Execution
End Type
Standard
Material Seat
Material Body
Sub Category
Item Number
Category

ISO 5211 - F10 non-direct
Straight
Full Bore
Butt welded
DIN
PTFE
Stainless Steel, 316
BALL
20-00001046
Valve



No	Part	Material	Code	Application
1	Body	Stainless Steel	ASTM A351-CF8M	Air
2	Cap	Stainless Steel	ASTM A351-CF8M	Boiler feedwater
3	Ball	Stainless Steel	ASTM A351-CF8M	Cargo oil
4	Seat	PTFE		Condensate
5	Stem	Stainless Steel	AISI 316	Corrosive fluids
6	Handle	Stainless Steel, Plastic Cover	AISI 430	Flammable hydraulic oil
				Fuel oil
				Gas
				Lubricating oil
				Non-flammable hydraulic fluid
				Sea water
				Water

DN	Pressure Rating Id	L	L1	Inch	H	Ø A
100	1000	231.4	325	4"	177	100

