



# BUTTERFLY VALVE W DN65 PN10 40-00001904

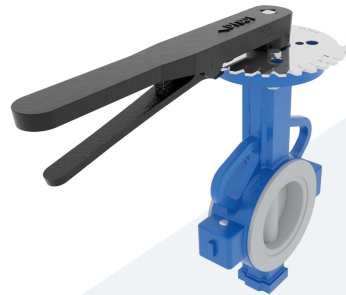
## Wafer type - with lever

705501

**DESCRIPTION:** Nodular Cast Iron two piece body and stainless steel two piece stem. Superior corrosion resistance with PTFE seat and disc coating. Standardized pattern for actuator mounting.

**STANDARD & DESIGN:**

End Standard	EN 1092-2
Face To Face Standard	EN 558, series 20
Inspection Standard	API 598
Remark	Multiflange: PN6/10/16, ANSI150, JIS10K
Min temperature	-40°C
Top Flange Standard	ISO 5211 - F07
Max temperature	+120°C
Variant	Lever
End Type	Wafer
Design Code	API 609
Standard	DIN
Material Seat	PTFE
Material Disc	PTFE
Material Body	Nodular Cast Iron, GGG40.3
Sub Category	BUTTERFLY
Item Number	40-00001904
Category	Valve



No	Part	Material	Code	Application
1	Body	Nodular Cast Iron	GGG40.3	Air
2	Shaft	Stainless Steel	SS431	Boiler feedwater
3	Seat	PTFE		Cargo oil
4	Disc	PTFE coated WCB		Condensate
5	Stem	Stainless Steel	SS431	Corrosive fluids
6	Seat energizer	Silicone		Flammable hydraulic oil
7	Pressing sleeve	Stainless steel		Fuel oil
8	Position plate	Carbon steel		Gas
9	Lever	Malleable Iron		Lubricating oil
				Non-flammable hydraulic fluid
				Sea water
				Water

DN	Pressure Rating Id	L	L1	H	H1	H2
65	10	46	285	258	82	150

