



BUTTERFLY VALVE L DN125 PN16

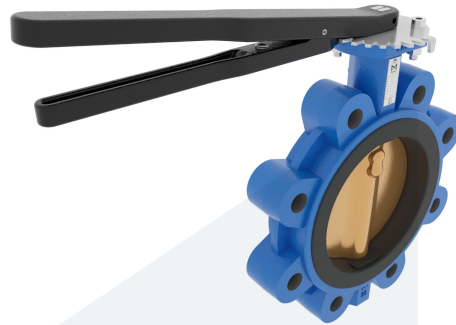
M34101
712702

Lug type - with lever

DESCRIPTION: Nodular Cast Iron body, vulcanized liner lugged type butterfly valve with Aluminium Bronze disc. Centric free stem with standardized pattern for actuator mounting. Can handle negative pressure (vacuum), due to the meticulous vulcanization process.

STANDARD & DESIGN:

End Standard	EN 1092-2
Face To Face Standard	EN 558, series 20
Inspection Standard	EN 12266
Remark	Connection: PN16
Min temperature	-30°C
Top Flange Standard	ISO 5211 - F07
Max temperature	+180°C
Variant	Lever
End Type	Lug
Design Code	EN 593
Standard	DIN
Material Seat	FPM/FKM
Material Disc	Aluminium Bronze
Material Body	Nodular Cast Iron, GGG40
Sub Category	BUTTERFLY
Item Number	M34101
Category	Valve



No	Part	Material	Code	Application
1	Body	Nodular Cast Iron	GGG40	Cargo oil
2	Disc	Aluminium Bronze		Corrosive fluids
3	Seat	FPM/FKM max working temp. 180°C		Flammable hydraulic oil
4	Stem	Stainless Steel	1.4401	Fuel oil
5	Pin	Duplex Stainless Steel	1.4462	Lubricating oil
6	Lever	Nodular Cast Iron	GGG40	Non-flammable hydraulic fluid
7	Position plate	Stainless Steel	1.4401	

DN	Pressure Rating Id	nxdd	Hcd	Ø D	L	Kg	L1	H	H1	L2	H2
125	16	8xM16	210	260	56	11	329	342	118	101	160

