



BUTTERFLY VALVE L DN65 PN16

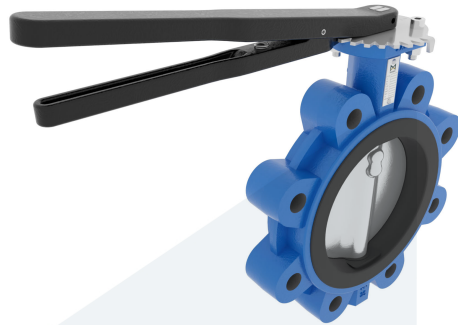
Lug type - with lever

M34105
710902

DESCRIPTION: Nodular Cast Iron body, vulcanized liner lugged type butterfly valve with Stainless Steel disc. Centric free stem with standardized pattern for actuator mounting. Can handle negative pressure (vacuum), due to the meticulous vulcanization process.

STANDARD & DESIGN:

| | |
|-----------------------|--------------------------|
| End Standard | EN 1092-2 |
| Face To Face Standard | EN 558, series 20 |
| Inspection Standard | EN 12266 |
| Remark | Connection: PN16 |
| Min temperature | -15°C |
| Top Flange Standard | ISO 5211 - F07 |
| Max temperature | +80°C |
| Variant | Lever |
| End Type | Lug |
| Design Code | EN 593 |
| Standard | DIN |
| Material Seat | NBR |
| Material Disc | Stainless Steel, 316 |
| Material Body | Nodular Cast Iron, GGG40 |
| Sub Category | BUTTERFLY |
| Item Number | M34105 |
| Category | Valve |



| No | Part | Material | Code | Application |
|----|----------------|----------------------------|--------|-------------------------------|
| 1 | Body | Nodular Cast Iron | GGG40 | Air |
| 2 | Disc | Stainless Steel | 1.4408 | Boiler feedwater |
| 3 | Seat | NBR max working temp. 80°C | | Cargo oil |
| 4 | Stem | Stainless Steel | 1.4401 | Condensate |
| 5 | Pin | Duplex Stainless Steel | 1.4462 | Flammable hydraulic oil |
| 6 | Lever | Nodular Cast Iron | GGG40 | Fuel oil |
| 7 | Position plate | Stainless Steel | 1.4401 | Gas |
| | | | | Lubricating oil |
| | | | | Non-flammable hydraulic fluid |
| | | | | Sea water |
| | | | | Water |

| DN | Pressure Rating Id | nxdd | Hcd | Ø D | L | Kg | L1 | H | H1 | L2 | H2 |
|----|--------------------|-------|-----|-----|----|-----|-----|-------|----|-----|-----|
| 65 | 16 | 4xM16 | 145 | 185 | 46 | 4.9 | 232 | 258,5 | 80 | 101 | 126 |

