



# BUTTERFLY VALVE W DN50 PN16

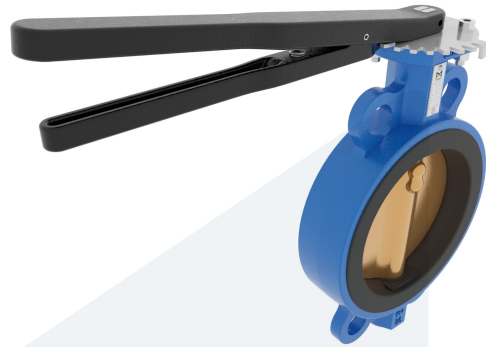
Wafer type - with lever

M34146  
702702

**DESCRIPTION:** Nodular Cast Iron body, vulcanized liner wafer type butterfly valve with Aluminium Bronze disc. Centric free stem with standardized pattern for actuator mounting. Can handle negative pressure (vacuum), due to the meticulous vulcanization process.

**STANDARD & DESIGN:**

End Standard	EN 1092-2
Face To Face Standard	EN 558, series 20
Inspection Standard	EN 12266
Remark	Multiflange: PN6/10/16/25, ANSI150, JIS5K/10K
Min temperature	-30°C
Top Flange Standard	ISO 5211 - F07
Max temperature	+180°C
Variant	Lever
End Type	Wafer
Design Code	EN 593
Standard	DIN
Material Seat	FPM/FKM
Material Disc	Aluminium Bronze
Material Body	Nodular Cast Iron, GGG40
Sub Category	BUTTERFLY
Item Number	M34146
Category	Valve



No	Part	Material	Code	Application
1	Body	Nodular Cast Iron	GGG40	Cargo oil
2	Disc	Aluminium Bronze		Corrosive fluids
3	Seat	FPM/FKM max working temp. 180°C		Flammable hydraulic oil
4	Stem	Stainless Steel	1.4401	Fuel oil
5	Pin	Duplex Stainless Steel	1.4462	Lubricating oil
6	Lever	Nodular Cast Iron	GGG40	Non-flammable hydraulic fluid
7	Position plate	Stainless Steel	1.4401	

DN	Pressure Rating Id	Ø D	L	Kg	L1	H	H1	L2	H2
50	16	92	43	3.3	232	242,5	71	101	118

