



# BUTTERFLY VALVE W DN65 PN16

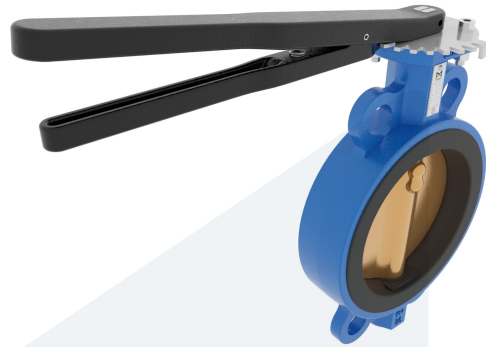
Wafer type - with lever

M34161  
701702

**DESCRIPTION:** Nodular Cast Iron body, vulcanized liner wafer type butterfly valve with Aluminium Bronze disc. Centric free stem with standardized pattern for actuator mounting. Can handle negative pressure (vacuum), due to the meticulous vulcanization process.

**STANDARD & DESIGN:**

|                       |   |
|-----------------------|---|
| End Standard          | EN 1092-2                                     |
| Face To Face Standard | EN 558, series 20                             |
| Inspection Standard   | EN 12266                                      |
| Remark                | Multiflange: PN6/10/16/25, ANSI150, JIS5K/10K |
| Min temperature       | -20°C   |
| PartNumberListId      | 0   |
| Top Flange Standard   | ISO 5211 - F07                                |
| Max temperature       | +100°C  |
| Variant               | Lever   |
| End Type              | Wafer   |
| Design Code           | EN 593  |
| Standard              | DIN   |
| Material Seat         | EPDM  |
| Material Disc         | Aluminium Bronze                              |
| Material Body         | Nodular Cast Iron, GGG40                      |
| Sub Category          | BUTTERFLY                                     |
| Item Number           | M34161  |
| Category              | Valve   |



| No | Part           | Material                     | Code   | Application      |
|----|----------------|------------------------------|--------|------------------|
| 6  | Lever          | Nodular Cast Iron            | GGG40  | Boiler feedwater |
| 7  | Position plate | Stainless Steel              | 1.4401 | Condensate       |
| 1  | Body           | Nodular Cast Iron            | GGG40  | Sea water        |
| 2  | Disc           | Aluminium Bronze             |        | Water            |
| 3  | Seat           | EPDM max working temp. 100°C |        |                  |
| 4  | Stem           | Stainless Steel              | 1.4401 |                  |
| 5  | Pin            | Duplex Stainless Steel       | 1.4462 |                  |

| DN | Pressure Rating Id | Ø D | L  | Kg  | L1  | H     | H1 | L2  | H2  |
|----|--------------------|-----|----|-----|-----|-------|----|-----|-----|
| 65 | 16                 | 107 | 46 | 3.8 | 232 | 265,5 | 86 | 101 | 126 |

