



BUTTERFLY VALVE W DN350 PN10

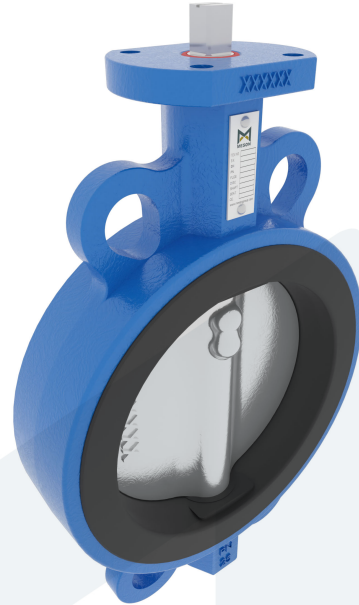
Wafer type - bare stem

M34235
702901

DESCRIPTION: Nodular Cast Iron body, vulcanized liner wafer type butterfly valve with Stainless Steel disc. Centric free stem with standardized pattern for actuator mounting. Can handle negative pressure (vacuum), due to the meticulous vulcanization process.

STANDARD & DESIGN:

End Standard	EN 1092-2
Face To Face Standard	EN 558, series 20
Inspection Standard	EN 12266
Remark	Multiflange: PN10/16, ANSI150, JIS10K
Min temperature	-30°C
Top Flange Standard	ISO 5211 - F12
Max temperature	+180°C
Variant	Bare stem
End Type	Wafer
Design Code	EN 593
Standard	DIN
Material Seat	FPM/FKM
Material Disc	Stainless Steel, 316
Material Body	Nodular Cast Iron, GGG40
Sub Category	BUTTERFLY
Item Number	M34235
Category	Valve



No	Part	Material	Code	Application
1	Body	Nodular Cast Iron	GGG40	Cargo oil
2	Disc	Stainless Steel	1.4408	Corrosive fluids
3	Seat	FPM/FKM max working temp. 180°C		Flammable hydraulic oil
4	Stem	Stainless Steel	1.4057	Fuel oil
5	Pin	Duplex Stainless Steel	1.4462	Lubricating oil
				Non-flammable hydraulic fluid

DN	Pressure Rating Id	Ø D	L	Kg	H1	Ø D2	H2	S	H3
350	10	437	78	43	288	150	315	27	30

