



BUTTERFLY VALVE SL DN600 PN10

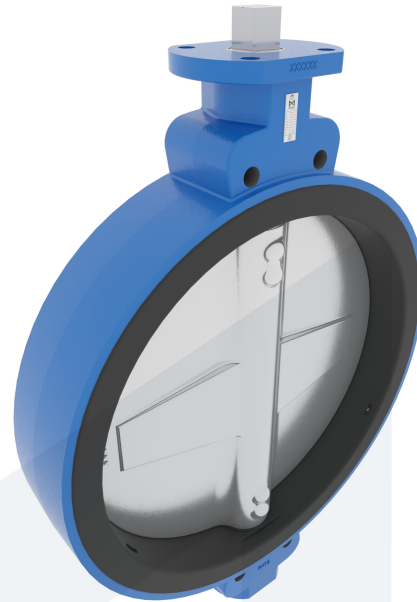
Semi Lug type - bare stem

M34329
700901

DESCRIPTION: Nodular Cast Iron body, vulcanized liner semi lug type butterfly valve with Stainless Steel disc. Centric free stem with standardized pattern for actuator mounting. Can handle negative pressure (vacuum), due to the meticulous vulcanization process.

STANDARD & DESIGN:

End Standard	EN 1092-2
Face To Face Standard	EN 558, series 20
Inspection Standard	EN 12266
Remark	Connection: PN10
Min temperature	-15°C
Top Flange Standard	ISO 5211 - F16
Max temperature	+80°C
Variant	Bare stem
End Type	Semi Lug
Design Code	EN 593
Standard	DIN
Material Seat	NBR
Material Disc	Stainless Steel, 316
Material Body	Nodular Cast Iron, GGG40
Sub Category	BUTTERFLY
Item Number	M34329
Category	Valve



No	Part	Material	Code	Application
1	Body	Nodular Cast Iron	GGG40	Air
2	Disc	Stainless Steel	1.4408	Boiler feedwater
3	Seat	NBR max working temp. 80°C		Cargo oil
4	Stem	Stainless Steel	1.4057	Condensate
5	Pin	Duplex Stainless Steel	1.4462	Flammable hydraulic oil
				Fuel oil
				Gas
				Lubricating oil
				Non-flammable hydraulic fluid
				Sea water
				Water

DN	Pressure Rating Id	nxdd	Ø D	L	Kg	H1	Ø D2	H2	S	H3
600	10	4xM27	697	154	208	431	210	465	46	48

