



# BUTTERFLY VALVE W DN50 PN16

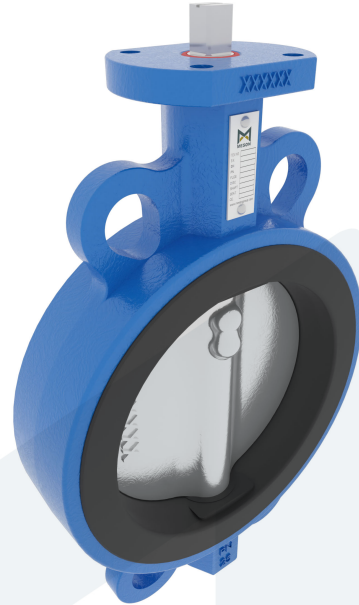
Wafer type - bare stem

M34355  
701902

**DESCRIPTION:** Nodular Cast Iron body, vulcanized liner wafer type butterfly valve with Stainless Steel disc. Centric free stem with standardized pattern for actuator mounting. Can handle negative pressure (vacuum), due to the meticulous vulcanization process.

**STANDARD & DESIGN:**

End Standard	EN 1092-2
Face To Face Standard	EN 558, series 20
Inspection Standard	EN 12266
Remark	Multiflange: PN6/10/16/25, ANSI150, JIS5K/10K
Min temperature	-20°C
Top Flange Standard	ISO 5211 - F07
Max temperature	+100°C
Variant	Bare stem
End Type	Wafer
Design Code	EN 593
Standard	DIN
Material Seat	EPDM
Material Disc	Stainless Steel, 316
Material Body	Nodular Cast Iron, GGG40
Sub Category	BUTTERFLY
Item Number	M34355
Category	Valve



No	Part	Material	Code	Application
1	Body	Nodular Cast Iron	GGG40	Boiler feedwater
2	Disc	Stainless Steel	1.4408	Condensate
3	Seat	EPDM max working temp. 100°C		Sea water
4	Stem	Stainless Steel	1.4401	Water
5	Pin	Duplex Stainless Steel	1.4462	

DN	Pressure Rating Id	Ø D	L	Kg	H1	Ø D2	H2	S	H3
50	16	92	43	2.4	71	90	118	11	19

