



BUTTERFLY VALVE W DN300 PN16

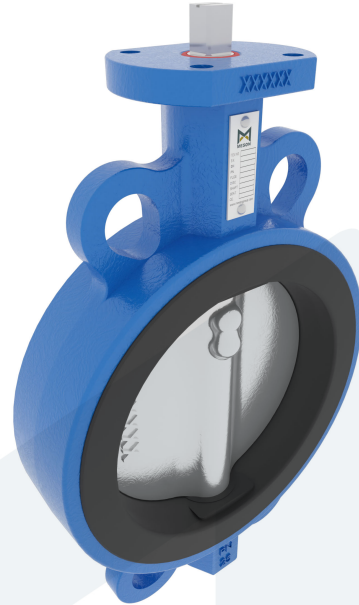
Wafer type - bare stem

M34363
701902

DESCRIPTION: Nodular Cast Iron body, vulcanized liner wafer type butterfly valve with Stainless Steel disc. Centric free stem with standardized pattern for actuator mounting. Can handle negative pressure (vacuum), due to the meticulous vulcanization process.

STANDARD & DESIGN:

| | |
|-----------------------|---|
| End Standard | EN 1092-2 |
| Face To Face Standard | EN 558, series 20 |
| Inspection Standard | EN 12266 |
| Remark | Multiflange: PN6/10/16/25, ANSI150, JIS5K/10K |
| Min temperature | -20°C |
| Top Flange Standard | ISO 5211 - F10 |
| Max temperature | +100°C |
| Variant | Bare stem |
| End Type | Wafer |
| Design Code | EN 593 |
| Standard | DIN |
| Material Seat | EPDM |
| Material Disc | Stainless Steel, 316 |
| Material Body | Nodular Cast Iron, GGG40 |
| Sub Category | BUTTERFLY |
| Item Number | M34363 |
| Category | Valve |



| No | Part | Material | Code | Application |
|----|------|------------------------------|--------|------------------|
| 1 | Body | Nodular Cast Iron | GGG40 | Boiler feedwater |
| 2 | Disc | Stainless Steel | 1.4408 | Condensate |
| 3 | Seat | EPDM max working temp. 100°C | | Sea water |
| 4 | Stem | Stainless Steel | 1.4401 | Water |
| 5 | Pin | Duplex Stainless Steel | 1.4462 | |

| DN | Pressure Rating Id | Ø D | L | Kg | H1 | Ø D2 | H2 | S | H3 |
|-----|--------------------|-----|----|----|-----|------|-----|----|----|
| 300 | 16 | 373 | 78 | 33 | 240 | 125 | 270 | 22 | 30 |

