



BUTTERFLY VALVE L DN200 PN16

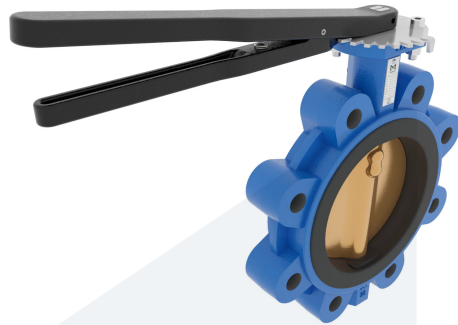
M34768
712702

Lug type - with lever

DESCRIPTION: Nodular Cast Iron body, vulcanized liner lugged type butterfly valve with Aluminium Bronze disc. Centric free stem with standardized pattern for actuator mounting. Can handle negative pressure (vacuum), due to the meticulous vulcanization process.

STANDARD & DESIGN:

| | |
|-----------------------|--------------------------|
| End Standard | EN 1092-2 |
| Face To Face Standard | EN 558, series 20 |
| Inspection Standard | EN 12266 |
| Remark | Connection: PN16 |
| Min temperature | -30°C |
| Top Flange Standard | ISO 5211 - F07 |
| Max temperature | +180°C |
| Variant | Lever |
| End Type | Lug |
| Design Code | EN 593 |
| Standard | DIN |
| Material Seat | FPM/FKM |
| Material Disc | Aluminium Bronze |
| Material Body | Nodular Cast Iron, GGG40 |
| Sub Category | BUTTERFLY |
| Item Number | M34768 |
| Category | Valve |



| No | Part | Material | Code | Application |
|----|----------------|---------------------------------|--------|-------------------------------|
| 1 | Body | Nodular Cast Iron | GGG40 | Cargo oil |
| 2 | Disc | Aluminium Bronze | | Corrosive fluids |
| 3 | Seat | FPM/FKM max working temp. 180°C | | Flammable hydraulic oil |
| 4 | Stem | Stainless Steel | 1.4401 | Fuel oil |
| 5 | Pin | Duplex Stainless Steel | 1.4462 | Lubricating oil |
| 6 | Lever | Nodular Cast Iron | GGG40 | Non-flammable hydraulic fluid |
| 7 | Position plate | Stainless Steel | 1.4401 | |

| DN | Pressure Rating Id | nxdd | Hcd | Ø D | L | Kg | L1 | H | H1 | L2 | H2 |
|-----|--------------------|--------|-----|-----|----|------|-----|-----|-----|-----|-----|
| 200 | 16 | 12xM20 | 295 | 356 | 60 | 17.5 | 329 | 435 | 167 | 101 | 204 |

