



BUTTERFLY VALVE L DN200 JIS 10K

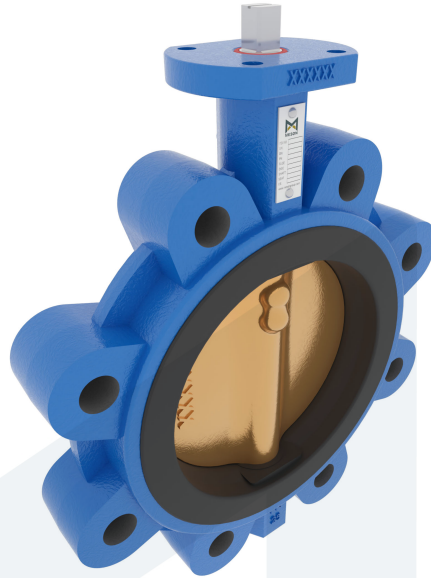
M35185
711702

Lug type - bare stem

DESCRIPTION: Nodular Cast Iron body, vulcanized liner lugged type butterfly valve with Aluminium Bronze disc. Centric free stem with standardized pattern for actuator mounting. Can handle negative pressure (vacuum), due to the meticulous vulcanization process.

STANDARD & DESIGN:

End Standard	JIS B2239
Face To Face Standard	EN 558, series 20
Inspection Standard	EN 12266
Remark	Connection: JIS 10K
Min temperature	-20°C
Top Flange Standard	ISO 5211 - F07
Max temperature	+100°C
Variant	Bare stem
End Type	Lug
Design Code	EN 593
Standard	JIS
Material Seat	EPDM
Material Disc	Aluminium Bronze
Material Body	Nodular Cast Iron, GGG40
Sub Category	BUTTERFLY
Item Number	M35185
Category	Valve



No	Part	Material	Code	Application
1	Body	Nodular Cast Iron	GGG40	Boiler feedwater
2	Disc	Aluminium Bronze		Condensate
3	Seat	EPDM max working temp. 100°C		Sea water
4	Stem	Stainless Steel	1.4401	Water
5	Pin	Duplex Stainless Steel	1.4462	

DN	Pressure Rating Id	nxdd	Hcd	Ø D	L	Kg	H1	Ø D2	H2	S	H3
200	10	12xM20	290	356	60	16	167	90	204	17	25

