



# BUTTERFLY VALVE L DN250 JIS 10K

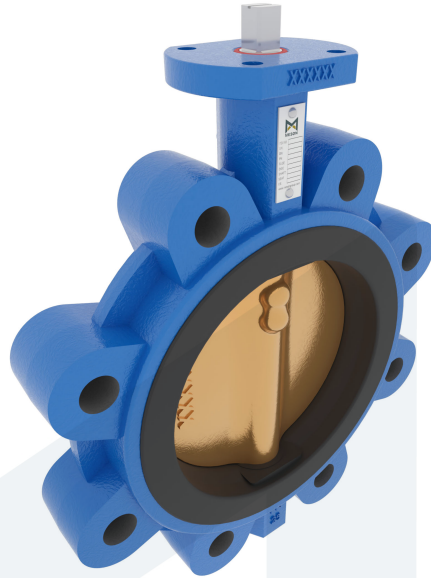
M35214  
712702

Lug type - bare stem

**DESCRIPTION:** Nodular Cast Iron body, vulcanized liner lugged type butterfly valve with Aluminium Bronze disc. Centric free stem with standardized pattern for actuator mounting. Can handle negative pressure (vacuum), due to the meticulous vulcanization process.

**STANDARD & DESIGN:**

End Standard	JIS B2239
Face To Face Standard	EN 558, series 20
Inspection Standard	EN 12266
Remark	Connection: JIS 10K
Min temperature	-30°C
Top Flange Standard	ISO 5211 - F10
Max temperature	+180°C
Variant	Bare stem
End Type	Lug
Design Code	EN 593
Standard	JIS
Material Seat	FPM/FKM
Material Disc	Aluminium Bronze
Material Body	Nodular Cast Iron, GGG40
Sub Category	BUTTERFLY
Item Number	M35214
Category	Valve



No	Part	Material	Code	Application
1	Body	Nodular Cast Iron	GGG40	Cargo oil
2	Disc	Aluminium Bronze		Corrosive fluids
3	Seat	FPM/FKM max working temp. 180°C		Flammable hydraulic oil
4	Stem	Stainless Steel	1.4401	Fuel oil
5	Pin	Duplex Stainless Steel	1.4462	Lubricating oil
				Non-flammable hydraulic fluid

DN	Pressure Rating Id	nxdd	Hcd	Ø D	L	Kg	H1	Ø D2	H2	S	H3
250	10	12xM24	355	420	68	31	203	125	245	22	30

