



BUTTERFLY VALVE SL DN500 PN10

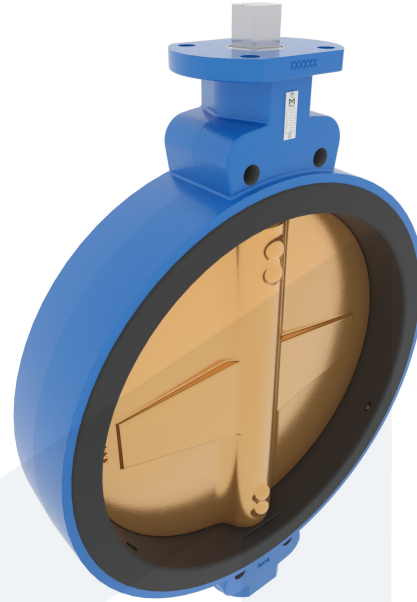
Semi Lug type - bare stem

M35250
701701

DESCRIPTION: Nodular Cast Iron body, vulcanized liner semi lug type butterfly valve with Aluminium Bronze disc. Centric free stem with standardized pattern for actuator mounting. Can handle negative pressure (vacuum), due to the meticulous vulcanization process.

STANDARD & DESIGN:

End Standard	EN 1092-2
Face To Face Standard	EN 558, series 20
Inspection Standard	EN 12266
Remark	Connection: PN10
Min temperature	-20°C
Top Flange Standard	ISO 5211 - F14
Max temperature	+100°C
Variant	Bare stem
End Type	Semi Lug
Design Code	EN 593
Standard	DIN
Material Seat	EPDM
Material Disc	Aluminium Bronze
Material Body	Nodular Cast Iron, GGG40
Sub Category	BUTTERFLY
Item Number	M35250
Category	Valve



No	Part	Material	Code	Application
1	Body	Nodular Cast Iron	GGG40	Boiler feedwater
2	Disc	Aluminium Bronze		Condensate
3	Seat	EPDM max working temp. 100°C		Sea water
4	Stem	Stainless Steel	1.4057	Water
5	Pin	Duplex Stainless Steel	1.4462	

DN	Pressure Rating Id	nxdd	Hcd	Ø D	L	Kg	H1	Ø D2	H2	S	H3
500	10	4xM24	620	595	127	138	379	175	415	36	38

