



BUTTERFLY VALVE L DN80 JIS 5K

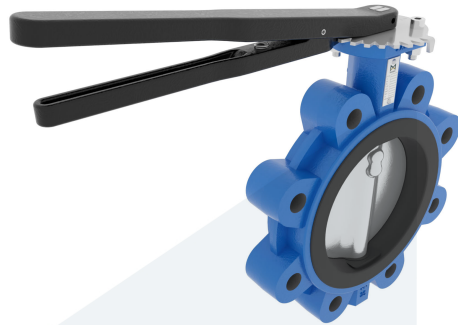
M35551
711901

Lug type - with lever

DESCRIPTION: Nodular Cast Iron body, vulcanized liner lugged type butterfly valve with Stainless Steel disc. Centric free stem with standardized pattern for actuator mounting. Can handle negative pressure (vacuum), due to the meticulous vulcanization process.

STANDARD & DESIGN:

| | |
|-----------------------|--------------------------|
| End Standard | JIS B2239 |
| Face To Face Standard | EN 558, series 20 |
| Inspection Standard | EN 12266 |
| Remark | Connection: JIS 5K |
| Min temperature | -20°C |
| Top Flange Standard | ISO 5211 - F07 |
| Max temperature | +100°C |
| Variant | Lever |
| End Type | Lug |
| Design Code | EN 593 |
| Standard | JIS |
| Material Seat | EPDM |
| Material Disc | Stainless Steel, 316 |
| Material Body | Nodular Cast Iron, GGG40 |
| Sub Category | BUTTERFLY |
| Item Number | M35551 |
| Category | Valve |



| No | Part | Material | Code | Application |
|----|----------------|------------------------------|--------|------------------|
| 1 | Body | Nodular Cast Iron | GGG40 | Boiler feedwater |
| 2 | Disc | Stainless Steel | 1.4408 | Condensate |
| 3 | Seat | EPDM max working temp. 100°C | | Sea water |
| 6 | Lever | Nodular Cast Iron | GGG40 | Water |
| 7 | Position plate | Stainless Steel | 1.4401 | |
| 4 | Stem | Stainless Steel | 1.4401 | |
| 5 | Pin | Duplex Stainless Steel | 1.4462 | |

| DN | Pressure Rating Id | nxdd | Hcd | Ø D | L | Kg | L1 | H | H1 | L2 | H2 |
|----|--------------------|-------|-----|-----|----|----|-----|-------|----|-----|-----|
| 80 | 5 | 4xM16 | 145 | 188 | 46 | 6 | 232 | 273,5 | 88 | 101 | 133 |

