



BUTTERFLY VALVE L DN65 JIS 10K

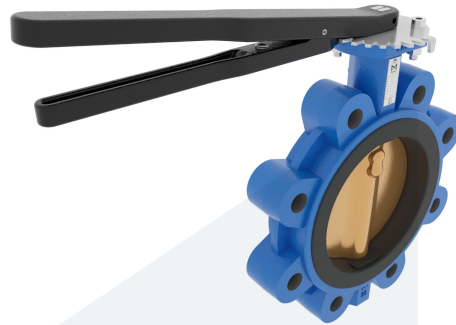
M35641
711702

Lug type - with lever

DESCRIPTION: Nodular Cast Iron body, vulcanized liner lugged type butterfly valve with Aluminium Bronze disc. Centric free stem with standardized pattern for actuator mounting. Can handle negative pressure (vacuum), due to the meticulous vulcanization process.

STANDARD & DESIGN:

| | |
|-----------------------|--------------------------|
| End Standard | JIS B2239 |
| Face To Face Standard | EN 558, series 20 |
| Inspection Standard | EN 12266 |
| Remark | Connection: JIS 10K |
| Min temperature | -20°C |
| Top Flange Standard | ISO 5211 - F07 |
| Max temperature | +100°C |
| Variant | Lever |
| End Type | Lug |
| Design Code | EN 593 |
| Standard | JIS |
| Material Seat | EPDM |
| Material Disc | Aluminium Bronze |
| Material Body | Nodular Cast Iron, GGG40 |
| Sub Category | BUTTERFLY |
| Item Number | M35641 |
| Category | Valve |



| No | Part | Material | Code | Application |
|----|----------------|------------------------------|--------|------------------|
| 1 | Body | Nodular Cast Iron | GGG40 | Boiler feedwater |
| 2 | Disc | Aluminium Bronze | | Condensate |
| 3 | Seat | EPDM max working temp. 100°C | | Sea water |
| 4 | Stem | Stainless Steel | 1.4401 | Water |
| 5 | Pin | Duplex Stainless Steel | 1.4462 | |
| 6 | Lever | Nodular Cast Iron | GGG40 | |
| 7 | Position plate | Stainless Steel | 1.4401 | |

| DN | Pressure Rating Id | nxdd | Hcd | Ø D | L | Kg | L1 | H1 | L2 | H2 | S | H3 |
|----|--------------------|-------|-----|-----|----|-----|-----|----|-----|-----|----|----|
| 65 | 10 | 4xM16 | 140 | 185 | 46 | 5.2 | 232 | 80 | 101 | 126 | 11 | 19 |

