



BUTTERFLY VALVE L DN150 JIS 10K

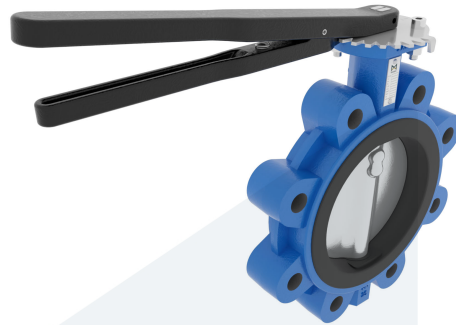
M35666
711902

Lug type - with lever

DESCRIPTION: Nodular Cast Iron body, vulcanized liner lugged type butterfly valve with Stainless Steel disc. Centric free stem with standardized pattern for actuator mounting. Can handle negative pressure (vacuum), due to the meticulous vulcanization process.

STANDARD & DESIGN:

End Standard	JIS B2239
Face To Face Standard	EN 558, series 20
Inspection Standard	EN 12266
Remark	Connection: JIS 10K
Min temperature	-20°C
Top Flange Standard	ISO 5211 - F07
Max temperature	+100°C
Variant	Lever
End Type	Lug
Design Code	EN 593
Standard	JIS
Material Seat	EPDM
Material Disc	Stainless Steel, 316
Material Body	Nodular Cast Iron, GGG40
Sub Category	BUTTERFLY
Item Number	M35666
Category	Valve



No	Part	Material	Code	Application
1	Body	Nodular Cast Iron	GGG40	Boiler feedwater
2	Disc	Stainless Steel	1.4408	Condensate
3	Seat	EPDM max working temp. 100°C		Sea water
4	Stem	Stainless Steel	1.4401	Water
5	Pin	Duplex Stainless Steel	1.4462	
6	Lever	Nodular Cast Iron	GGG40	
7	Position plate	Stainless Steel	1.4401	

DN	Pressure Rating Id	nxdd	Hcd	Ø D	L	Kg	L1	H	H1	L2	H2
150	10	8xM20	240	290	56	14	329	384	140	101	180

