



BUTTERFLY VALVE DF DN100 PN16

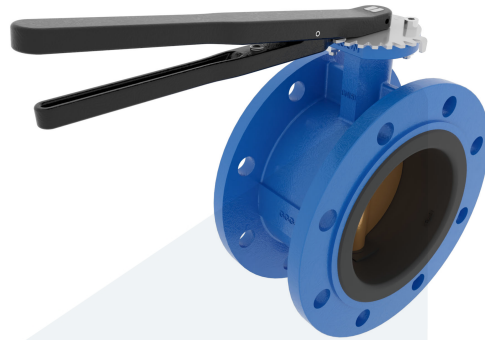
Double flange type - with lever

M36258
730702

DESCRIPTION: Nodular Cast Iron body, vulcanized liner double flange type butterfly valve with Aluminium Bronze disc. Centric free stem with standardized pattern for actuator mounting. Can handle negative pressure (vacuum), due to the meticulous vulcanization process.

STANDARD & DESIGN:

End Standard	EN 1092-2
Face To Face Standard	EN 558, series 13
Inspection Standard	EN 12266
Remark	Connection: PN16
Min temperature	-15°C
PartNumberListId	0
Top Flange Standard	ISO 5211 - F07
Max temperature	+80°C
Variant	Lever
End Type	Double flange
Design Code	EN 593
Standard	DIN
Material Seat	NBR
Material Disc	Aluminium Bronze
Material Body	Nodular Cast Iron, GGG40
Sub Category	BUTTERFLY
Item Number	M36258
Category	Valve



No	Part	Material	Code	Application
1	Body	Nodular Cast Iron	GGG40	Air
2	Disc	Aluminium Bronze		Boiler feedwater
3	Seat	NBR max working temp. 80°C		Cargo oil
4	Stem	Stainless Steel	1.4401	Condensate
5	Pin	Duplex Stainless Steel	1.4462	Flammable hydraulic oil
6	Lever	Nodular Cast Iron	GGG40	Fuel oil
7	Position plate	Stainless Steel	1.4401	Gas
				Lubricating oil
				Non-flammable hydraulic fluid
				Sea water
				Water

DN	Pressure Rating Id	nxdd	Hcd	Ø D	L	Kg	L1	H	H1	L2	H2
100	16	8x19	180	220	127	11.5	232	305,5	106	101	147

