



# BUTTERFLY VALVE L DN50 PN16

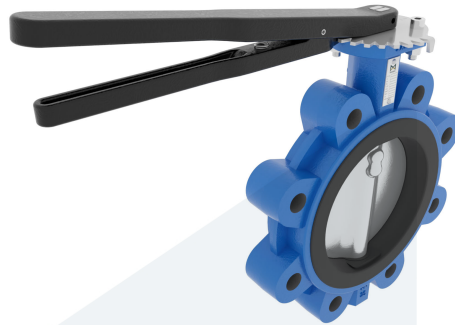
Lug type - with lever

M95472  
711802

**DESCRIPTION:** Nodular Cast Iron body, vulcanized liner wafer type butterfly valve with Super Duplex disc. Centric free stem with standardized pattern for actuator mounting. Can handle negative pressure (vacuum), due to the meticulous vulcanization process.

**STANDARD & DESIGN:**

|                       |                               |
|-----------------------|-------------------------------|
| End Standard          | EN 1092-2                     |
| Face To Face Standard | EN 558, series 20             |
| Inspection Standard   | EN 12266                      |
| Remark                | Connection: PN16              |
| Min temperature       | -20°C                         |
| Top Flange Standard   | ISO 5211 - F07                |
| Max temperature       | +100°C                        |
| Variant               | Lever                         |
| End Type              | Lug                           |
| Design Code           | EN 593                        |
| Standard              | DIN                           |
| Material Seat         | EPDM                          |
| Material Disc         | Stainless Steel, Super Duplex |
| Material Body         | Nodular Cast Iron, GGG40      |
| Sub Category          | BUTTERFLY                     |
| Item Number           | M95472                        |
| Category              | Valve                         |



| No | Part           | Material                     | Code   | Application      |
|----|----------------|------------------------------|--------|------------------|
| 1  | Body           | Nodular Cast Iron            | GGG40  | Boiler feedwater |
| 2  | Disc           | Super Duplex Stainless Steel | 1.4469 | Condensate       |
| 3  | Seat           | EPDM max working temp. 100°C |        | Sea water        |
| 4  | Stem           | Stainless Steel              | 1.4401 | Water            |
| 5  | Pin            | Duplex Stainless Steel       | 1.4462 |                  |
| 6  | Lever          | Nodular Cast Iron            | GGG40  |                  |
| 7  | Position plate | Stainless Steel              | 1.4401 |                  |

| DN | Pressure Rating Id | nxdd  | Hcd | Ø D | L  | Kg | L1  | H     | H1 | L2  | H2  |
|----|--------------------|-------|-----|-----|----|----|-----|-------|----|-----|-----|
| 50 | 16                 | 4xM16 | 125 | 161 | 43 | 4  | 232 | 241,5 | 71 | 101 | 118 |

