



BUTTERFLY VALVE L DN100 PN16

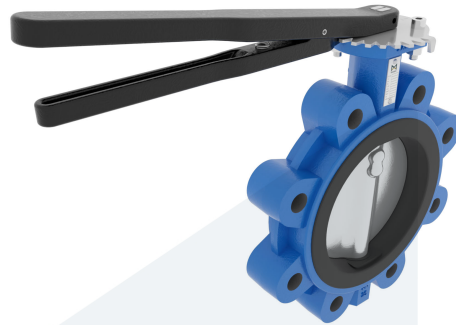
M95475
711802

Lug type - with lever

DESCRIPTION: Nodular Cast Iron body, vulcanized liner wafer type butterfly valve with Super Duplex disc. Centric free stem with standardized pattern for actuator mounting. Can handle negative pressure (vacuum), due to the meticulous vulcanization process.

STANDARD & DESIGN:

End Standard	EN 1092-2
Face To Face Standard	EN 558, series 20
Inspection Standard	EN 12266
Remark	Connection: PN16
Min temperature	-20°C
Top Flange Standard	ISO 5211 - F07
Max temperature	+100°C
Variant	Lever
End Type	Lug
Design Code	EN 593
Standard	DIN
Material Seat	EPDM
Material Disc	Stainless Steel, Super Duplex
Material Body	Nodular Cast Iron, GGG40
Sub Category	BUTTERFLY
Item Number	M95475
Category	Valve



No	Part	Material	Code	Application
6	Lever	Nodular Cast Iron	GGG40	Boiler feedwater
7	Position plate	Stainless Steel	1.4401	Condensate
1	Body	Nodular Cast Iron	GGG40	Sea water
2	Disc	Super Duplex Stainless Steel	1.4469	Water
3	Seat	EPDM max working temp. 100°C		
4	Stem	Stainless Steel	1.4401	
5	Pin	Duplex Stainless Steel	1.4462	

DN	Pressure Rating Id	nxdd	Hcd	Ø D	L	Kg	L1	H	H1	L2	H2
100	16	8xM16	180	226	52	7.2	232	305,5	106	101	147

