



BUTTERFLY VALVE DF DN150 PN16

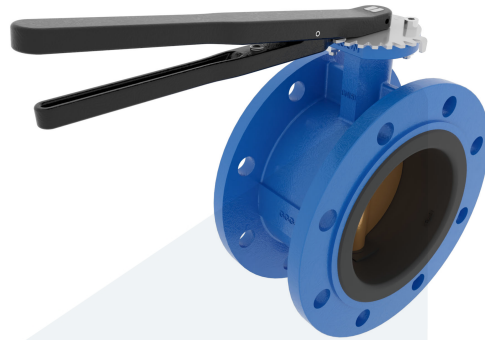
Double flange type - with lever

M95920
731702

DESCRIPTION: Nodular Cast Iron body, vulcanized liner double flange type butterfly valve with Aluminium Bronze disc. Centric free stem with standardized pattern for actuator mounting. Can handle negative pressure (vacuum), due to the meticulous vulcanization process.

STANDARD & DESIGN:

| | |
|-----------------------|--------------------------|
| End Standard | EN 1092-2 |
| Face To Face Standard | EN 558, series 13 |
| Inspection Standard | EN 12266 |
| Remark | Connection: PN16 |
| Min temperature | -20°C |
| Top Flange Standard | ISO 5211 - F07 |
| Max temperature | +100°C |
| Variant | Lever |
| End Type | Double flange |
| Design Code | EN 593 |
| Standard | DIN |
| Material Seat | EPDM |
| Material Disc | Aluminium Bronze |
| Material Body | Nodular Cast Iron, GGG40 |
| Sub Category | BUTTERFLY |
| Item Number | M95920 |
| Category | Valve |



| No | Part | Material | Code | Application |
|----|----------------|------------------------------|--------|------------------|
| 1 | Body | Nodular Cast Iron | GGG40 | Boiler feedwater |
| 2 | Disc | Aluminium Bronze | | Condensate |
| 3 | Seat | EPDM max working temp. 100°C | | Sea water |
| 4 | Stem | Stainless Steel | 1.4401 | Water |
| 5 | Pin | Duplex Stainless Steel | 1.4462 | |
| 6 | Lever | Nodular Cast Iron | GGG40 | |
| 7 | Position plate | Stainless Steel | 1.4401 | |

| DN | Pressure Rating Id | nxdd | Hcd | Ø D | L | Kg | L1 | H | H1 | L2 | H2 |
|-----|--------------------|------|-----|-----|-----|----|-----|-----|-----|-----|-----|
| 150 | 16 | 8x23 | 240 | 285 | 140 | 20 | 329 | 384 | 140 | 101 | 180 |

