



DUAL PLATE CHECK VALVE DN300 PN10

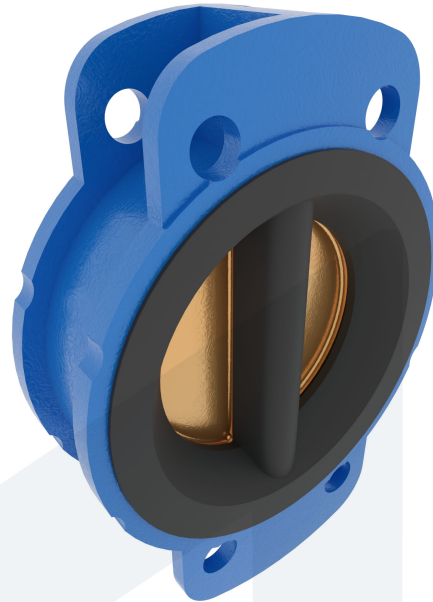
Wafer type with mounting loops

60-0000294
315201

DESCRIPTION: Nodular Cast Iron body, NBR sealing, spring tensioned dual plate check valve with Aluminium Bronze disc.

STANDARD & DESIGN:

| | |
|----------------------|----------------------------|
| End Standard | EN 1092-2 |
| Inspection Standard | API 598 |
| Remark | Connection: PN10 |
| Min temperature | -15°C |
| Max temperature | +80°C |
| Throughput Direction | Straight |
| End Type | Wafer |
| Standard | DIN |
| Material Seat | NBR |
| Material Disc | Aluminium Bronze |
| Material Body | Nodular Cast Iron, GGG40.3 |
| Sub Category | CHECK |
| Item Number | 60-0000294 |
| Category | Valve |



| No | Part | Material | Code | Application |
|----|------------|-------------------|---------|-------------------------|
| 1 | Body | Nodular Cast Iron | GGG40.3 | Boiler feedwater |
| 2 | Disc | Aluminium Bronze | | Cargo oil |
| 3 | Seat | NBR | | Condensate |
| 4 | Shaft | Stainless Steel | SS 316 | Flammable hydraulic oil |
| 5 | Shaft plug | Stainless Steel | SS 316 | Fuel oil |
| 6 | Spring | Stainless Steel | SS 304 | Lubricating oil |
| | | | | Sea water |
| | | | | Water |

| DN | Pressure Rating Id | nxdd | Hcd | Ø D | L | Kg | L1 | Ø D1 | Ø D2 | R | Ø F | Ø D3 |
|-----|--------------------|-------|-----|-----|-------|------|-----|-------|------|-----|-----|-------|
| 300 | 10 | 12x23 | 400 | 403 | 130.2 | 40.4 | 125 | 365.6 | 327 | 148 | 497 | 274.6 |

