



# DUAL PLATE CHECK VALVE DN500 PN10

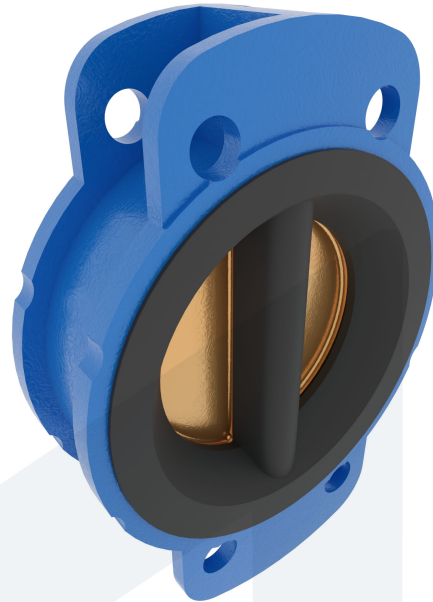
## Dual-Check-Valve DN500

60-0000298  
315201

**DESCRIPTION:** Nodular Cast Iron body, NBR sealing, spring tensioned dual plate check valve with Aluminium Bronze disc.

**STANDARD & DESIGN:**

End Standard	EN 1092-2
Inspection Standard	API 598
Remark	Connection: PN10
Min temperature	-15°C
Max temperature	+80°C
Throughput Direction	Straight
End Type	Wafer
Standard	DIN
Material Seat	NBR
Material Disc	Aluminium Bronze
Sub Category	CHECK
Item Number	60-0000298
Category	Valve



No	Part	Material	Code	Application
1	Body	Nodular Cast Iron	GGG40.3	Boiler feedwater
2	Disc	Aluminium Bronze		Cargo oil
3	Seat	NBR		Condensate
4	Shaft	Stainless Steel	SS 316	Flammable hydraulic oil
5	Shaft plug	Stainless Steel	SS 316	Fuel oil
6	Spring	Stainless Steel	SS 304	Lubricating oil
				Sea water
				Water

DN	Pressure Rating Id	nxdd	Hcd	Ø D	L	Kg	L1	Ø D1	Ø D2	R	Ø F	Ø D3
500	10	20x28	620	597	215.9	126	210.5	553.6	511.2	241	700	469.9

