



DUAL PLATE CHECK VALVE DN50 PN16

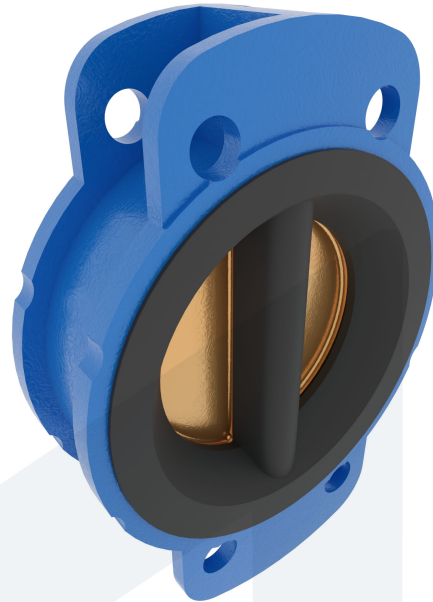
Wafer type with mounting loops

60-00000300
315202

DESCRIPTION: Nodular Cast Iron body, NBR sealing, spring tensioned dual plate check valve with Aluminium Bronze disc.

STANDARD & DESIGN:

End Standard	EN 1092-2
Inspection Standard	API 598
Remark	Connection: PN16
Min temperature	-15°C
Max temperature	+80°C
Throughput Direction	Straight
End Type	Wafer
Standard	DIN
Material Seat	NBR
Material Disc	Aluminium Bronze
Material Body	Nodular Cast Iron, GGG40.3
Sub Category	CHECK
Item Number	60-00000300
Category	Valve



No	Part	Material	Code	Application
1	Body	Nodular Cast Iron	GGG40.3	Boiler feedwater
2	Disc	Aluminium Bronze		Cargo oil
3	Seat	NBR		Condensate
4	Shaft	Stainless Steel	SS 316	Flammable hydraulic oil
5	Shaft plug	Stainless Steel	SS 316	Fuel oil
6	Spring	Stainless Steel	SS 304	Lubricating oil
				Sea water
				Water

DN	Pressure Rating Id	nxdd	Hcd	Ø D	L	Kg	L1	Ø D1	Ø D2	R	Ø F	Ø D3
50	16	4x19	125	101	54	2	50	84.6	66.7	29	165	47.6

