



DUAL PLATE CHECK VALVE DN150 PN16

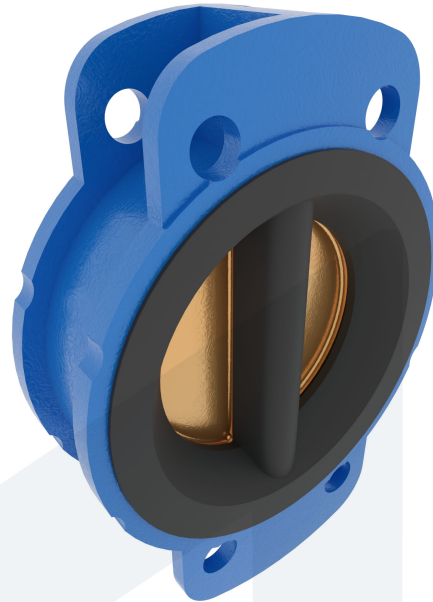
Wafer type with mounting loops

60-00000311
315202

DESCRIPTION: Nodular Cast Iron body, NBR sealing, spring tensioned dual plate check valve with Aluminium Bronze disc.

STANDARD & DESIGN:

| | |
|----------------------|----------------------------|
| End Standard | EN 1092-2 |
| Inspection Standard | API 598 |
| Remark | Connection: PN16 |
| Min temperature | -15°C |
| Max temperature | +80°C |
| Throughput Direction | Straight |
| End Type | Wafer |
| Standard | DIN |
| Material Seat | NBR |
| Material Disc | Aluminium Bronze |
| Material Body | Nodular Cast Iron, GGG40.3 |
| Sub Category | CHECK |
| Item Number | 60-00000311 |
| Category | Valve |



| No | Part | Material | Code | Application |
|----|------------|-------------------|---------|-------------------------|
| 1 | Body | Nodular Cast Iron | GGG40.3 | Boiler feedwater |
| 2 | Disc | Aluminium Bronze | | Cargo oil |
| 3 | Seat | NBR | | Condensate |
| 4 | Shaft | Stainless Steel | SS 316 | Flammable hydraulic oil |
| 5 | Shaft plug | Stainless Steel | SS 316 | Fuel oil |
| 6 | Spring | Stainless Steel | SS 304 | Lubricating oil |
| | | | | Sea water |
| | | | | Water |

| DN | Pressure Rating Id | nxdd | Hcd | Ø D | L | Kg | L1 | Ø D1 | Ø D2 | R | Ø F | Ø D3 |
|-----|--------------------|------|-----|-----|------|------|----|-------|-------|----|-----|-------|
| 150 | 16 | 8x23 | 240 | 222 | 79.4 | 11.1 | 76 | 200.5 | 171.5 | 79 | 304 | 141.3 |

