



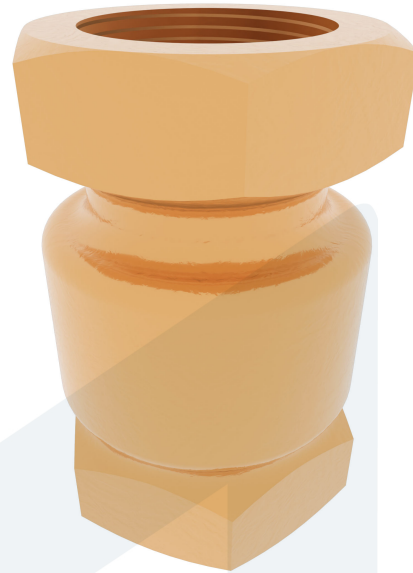
VERTICAL CHECK VALVE 1 1/2" PN16

60-00000328
320022

DESCRIPTION: RG5 body vertical check valve with metal sealing.
BSPP female threaded ends.

STANDARD & DESIGN:

End Standard	ISO 228-1
Inspection Standard	EN 12266
Min temperature	-10°C
Max temperature	+180°C
Throughput Direction	Straight
End Type	Threaded
Standard	DIN
Material Disc	Brass
Material Body	Bronze
Sub Category	CHECK
Item Number	60-00000328
Category	Valve



No	Part	Material	Code	Application
1	Body	Bronze	CC 491K	Air
2	Disc	Brass	CW 614N	Boiler feedwater
3	Ring nut	Brass	CW 614N	Cargo oil
				Condensate
				Flammable hydraulic oil
				Fuel oil
				Gas
				Lubricating oil
				Non-flammable hydraulic fluid
				Sea water
				Steam
				Water

DN	Pressure Rating Id	Ø D	L	Kg	Inch	Ø A
40	16	68	85	0.9	1 1/2"	38

