

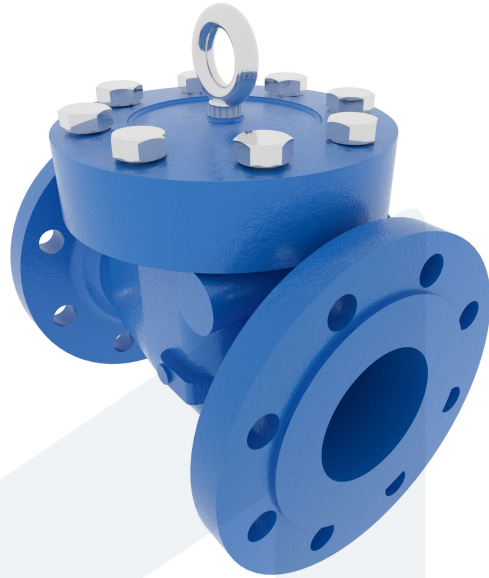


# SWING CHECK VALVE DN65 ANSI-150 60-00000562 370267

**DESCRIPTION:** Cast Steel body, full bore swing check valve with Stainless Steel seat and Cast Steel disc. Raised face flanges.

**STANDARD & DESIGN:**

End Standard	ASME B16.5
Face To Face Standard	ASME B16.10
Inspection Standard	API 598
Remark	Connection: ANSI 150
Throughput Direction	Straight
Execution	Full Bore
End Type	Flanged
Design Code	API 594
Standard	ANSI
Material Seat	Stainless Steel, 420
Material Disc	Cast Steel
Material Body	Cast Steel
Sub Category	CHECK
Item Number	60-00000562
Category	Valve



No	Part	Material	Code	Application
1	Body	Cast Steel	ASTM A216-WCB	Boiler feedwater
2	Bonnet	Cast Steel	ASTM A216-WCB	Cargo oil
3	Disc	Cast Steel	ASTM A216-WCB	Condensate
4	Seat	Stainless Steel	Deposited 13Cr	Flammable hydraulic oil
5	Hinge	Cast Steel	ASTM A216-WCB	Fuel oil
6	Hinge pin	Stainless Steel	ASTM A276-420	Lubricating oil
7	Gasket	Graphite		Non-flammable hydraulic fluid Sea water Water

DN	Pressure Rating Id	nxdd	Hcd	Ø D	L	Kg	H
65	150	4x19	139.7	180	216	23	180

