



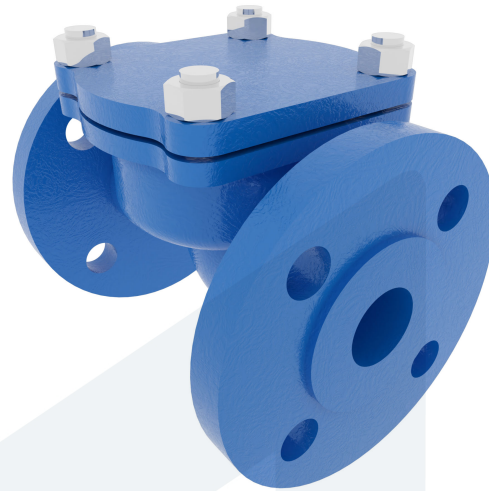
LIFT CHECK VALVE DN150 PN16

60-0000622
472002

DESCRIPTION: Nodular Cast Iron body, metal seated spring loaded lift check valve. Raised face flanges.

STANDARD & DESIGN:

End Standard	EN 1092-2
Face To Face Standard	EN 558, series 1
Remark	Connection: PN16
Min temperature	-10°C
Max temperature	+180°C
Throughput Direction	Straight
End Type	Flanged
Design Code	DIN 86252
Standard	DIN
Material Seat	Bronze
Material Disc	Nodular Cast Iron, GGG40.3
Material Body	Nodular Cast Iron, GGG40.3
Sub Category	CHECK
Item Number	60-0000622
Category	Valve



No	Part	Material	Code	Application
1	Body	Nodular Cast Iron	GGG40.3	Boiler feedwater
2	Bonnet	Nodular Cast Iron	GGG40.3	Cargo oil
3	Seat	Bronze	CC 491K	Condensate
4	Disc	Nodular Cast Iron	GGG40.3	Flammable hydraulic oil
5	Bonnet Gasket	Graphite		Fuel oil
6	Spring	Spring Steel	1.4310	Lubricating oil
				Non-flammable hydraulic fluid
				Sea water
				Steam
				Water

DN	Pressure Rating Id	nxdd	Hcd	Ø D	L	Kg	H
150	16	8x22	240	285	480	60	200

