

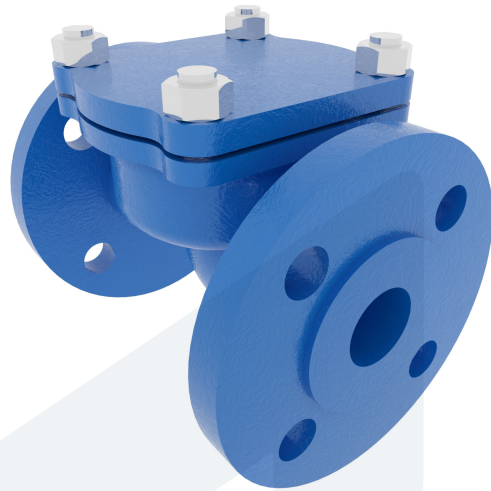


# LIFT CHECK VALVE DN15 PN16 60-00000657 472052

**DESCRIPTION:** Cast Iron body, metal seated spring loaded lift check valve. Raised face flanges.

**STANDARD & DESIGN:**

End Standard	EN 1092-2
Face To Face Standard	EN 558, series 1
Remark	Connection: PN16
Min temperature	-10°C
Max temperature	+180°C
Throughput Direction	Straight
End Type	Flanged
Design Code	DIN 86252
Standard	DIN
Material Seat	Bronze
Material Disc	Bronze
Material Body	Cast Iron
Sub Category	CHECK
Item Number	60-00000657
Category	Valve



No	Part	Material	Code	Application
1	Body	Cast Iron	GG25	Boiler feedwater
2	Bonnet	Cast Iron	GG25	Cargo oil
3	Seat	Bronze	CC 491K	Condensate
4	Disc	Bronze	CC 491K	Flammable hydraulic oil
5	Bonnet Gasket	Graphite		Fuel oil
6	Spring	Spring Steel	1.4310	Lubricating oil
				Non-flammable hydraulic fluid
				Sea water
				Steam
				Water

DN	Pressure Rating Id	nxdd	Hcd	Ø D	L	Kg	H
15	16	4x14	65	95	130	3	55

