



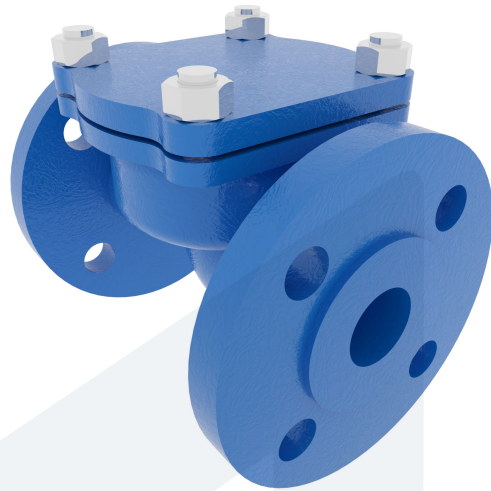
LIFT CHECK VALVE DN 80 PN16

60-00000665
472052

DESCRIPTION: Cast Iron body, metal seated spring loaded lift check valve. Raised face flanges.

STANDARD & DESIGN:

End Standard	EN 1092-2
Face To Face Standard	EN 558, series 1
Remark	Connection: PN16
Min temperature	-10°C
Max temperature	+180°C
Throughput Direction	Straight
End Type	Flanged
Design Code	DIN 86252
Standard	DIN
Material Seat	Stainless Steel, 304
Material Disc	Nodular Cast Iron, GGG40.3
Material Body	Cast Iron
Sub Category	CHECK
Item Number	60-00000665
Category	Valve



No	Part	Material	Code	Application
1	Body	Cast Iron	GG25	Boiler feedwater
2	Bonnet	Cast Iron	GG25	Cargo oil
3	Seat	Stainless Steel	-	Condensate
4	Disc	Nodular Cast Iron	GGG40.3	Flammable hydraulic oil
5	Bonnet Gasket	Graphite		Fuel oil
6	Spring	Spring Steel	1.4310	Lubricating oil
				Non-flammable hydraulic fluid
				Sea water
				Steam
				Water

DN	Pressure Rating Id	nxdd	Hcd	Ø D	L	Kg	H
80	16	8x18	160	200	310	22	115

