

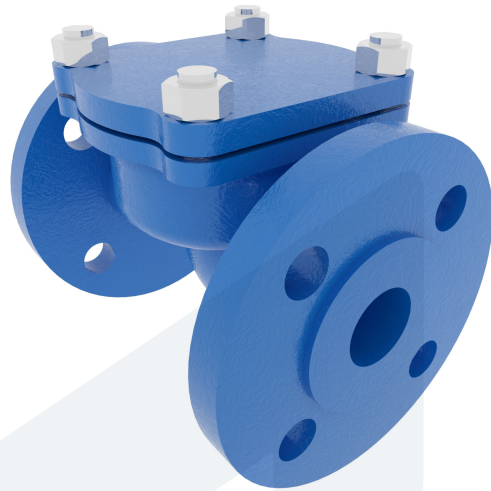


# LIFT CHECK VALVE DN65 PN40 60-0000680 472064

**DESCRIPTION:** Cast Steel body, metal seated spring loaded lift check valve. Raised face flanges.

**STANDARD & DESIGN:**

End Standard	EN 1092-1
Face To Face Standard	EN 558, series 1
Remark	Connection: PN40
Min temperature	-10°C
Max temperature	+180°C
Throughput Direction	Straight
End Type	Flanged
Design Code	EN 13709
Standard	DIN
Material Seat	Stainless Steel, 304
Material Disc	Stainless Steel, 420
Material Body	Cast Steel
Sub Category	CHECK
Item Number	60-0000680
Category	Valve



No	Part	Material	Code	Application
1	Body	Cast Steel	GS-C25	Boiler feedwater
2	Bonnet	Cast Steel	GS-C25	Cargo oil
3	Seat	Stainless Steel	1.4301	Condensate
4	Disc	Stainless Steel	1.4021	Flammable hydraulic oil
5	Bonnet Gasket	Graphite		Fuel oil
6	Spring	Spring Steel	1.4310	Lubricating oil
				Non-flammable hydraulic fluid
				Sea water
				Steam
				Water

DN	Pressure Rating Id	Ø D	L	Kg	H
65	40	185	290	15	95

