



BALL CHECK VALVE DN50 PN10

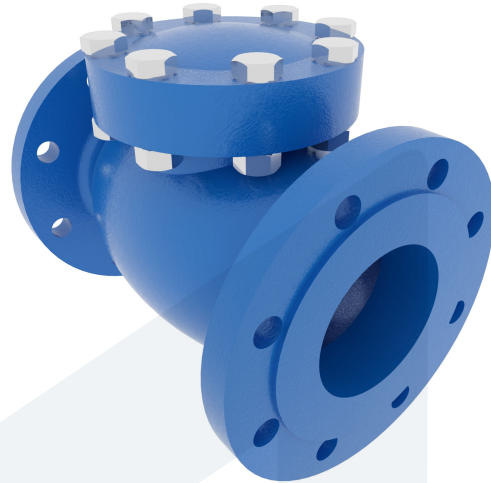
Ball Check Valve DN50 PN10

60-00000711
472451

DESCRIPTION: Cast Iron body ball check valve. EPDM lined ball.
Raised face flanges.

STANDARD & DESIGN:

End Standard	EN 1092-2
Face To Face Standard	EN 558, series 48
Remark	Connection: PN10
Min temperature	-10°C
Max temperature	+120°C
Throughput Direction	Straight
End Type	Flanged
Standard	DIN
Material Body	Cast Iron
Sub Category	CHECK
Item Number	60-00000711
Category	Valve



No	Part	Material	Code	Application
1	Body	Cast Iron	GG25	Sea water
2	Bonnet	Cast Iron	GG25	Sewage water
3	Ball	NBR		Water
4	Bonnet Gasket	Asbestos Free		

DN	Pressure Rating Id	nxdd	Hcd	Ø D	L	Kg	H
50	10	4x18	125	165	200	10	102

