



DISC CHECK VALVE DN150 PN25

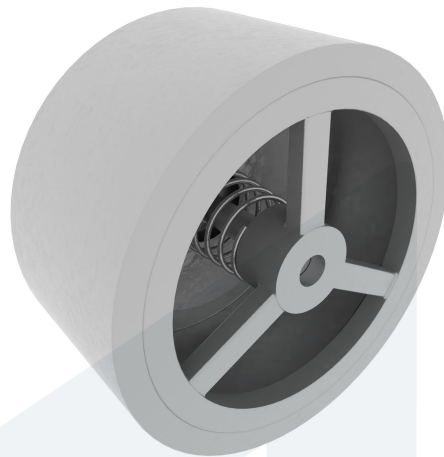
60-00000721
473093

Wafer type

DESCRIPTION: Wafer type, Stainless Steel body, spring tensioned disc check valve with metal sealing.

STANDARD & DESIGN:

Face To Face Standard	EN 558, series 49
Throughput Direction	Straight
End Type	Wafer
Standard	DIN
Material Disc	Stainless Steel, 316
Material Body	Stainless Steel, 316
Sub Category	CHECK
Item Number	60-00000721
Category	Valve



No	Part	Material	Code	Application
2	Cap	Stainless Steel	1.4408	Air
3	Disc	Stainless Steel	1.4408	Boiler feedwater
4	Spring	Stainless Steel	SS316	Cargo oil
1	Body	Stainless Steel	1.4408	Condensate Corrosive fluids Flammable hydraulic oil Fuel oil Gas Lubricating oil Non-flammable hydraulic fluid Sea water Water

DN	Pressure Rating Id	Ø D	L	Kg	Ø A
150	25	218	106	10.4	130

