



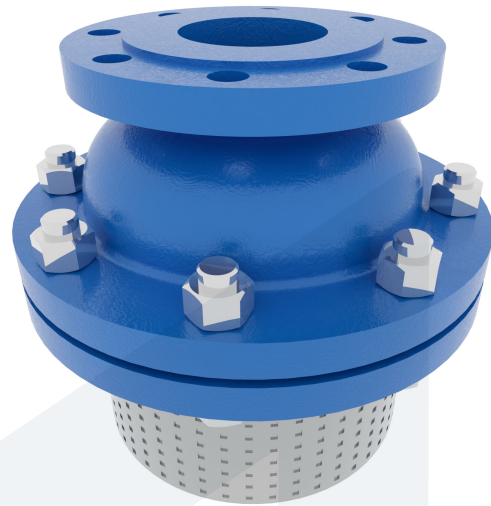
FOOT VALVE DN40 PN10

60-00000742
485451

DESCRIPTION: Cast Iron body, combination of screened suction inlet and soft sealing disc check valve. Raised face flanges.

STANDARD & DESIGN:

| | |
|----------------------|------------------|
| End Standard | EN 1092-2 |
| Remark | Connection: PN10 |
| Min temperature | -10°C |
| Max temperature | +120°C |
| Throughput Direction | Straight |
| End Type | Flanged |
| Standard | DIN |
| Material Seat | EPDM |
| Material Disc | Cast Iron |
| Material Body | Cast Iron |
| Sub Category | CHECK |
| Item Number | 60-00000742 |
| Category | Valve |
| Mesh size | 5 mm |



| No | Part | Material | Code | Application |
|----|---------------|-----------------|--------|-------------------------|
| 1 | Body | Cast Iron | GG25 | Cargo oil |
| 2 | Bonnet | Cast Iron | GG25 | Flammable hydraulic oil |
| 3 | Disc | Cast Iron | GG25 | Fuel oil |
| 4 | Basket | Stainless Steel | 1.4301 | Lubricating oil |
| 5 | Disc ring | EPDM | | Sea water |
| 6 | Bonnet Gasket | EPDM | | Water |

| DN | Pressure Rating Id | nxdd | Hcd | Ø D | Kg | H |
|----|--------------------|------|-----|-----|----|-----|
| 40 | 10 | 4x18 | 110 | 150 | 10 | 230 |

