



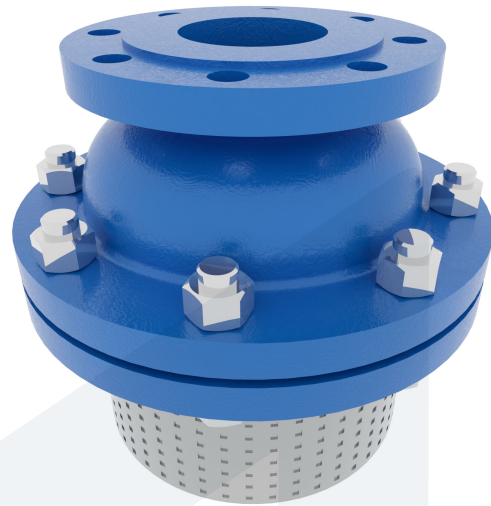
FOOT VALVE DN100 PN10

60-00000746
485451

DESCRIPTION: Cast Iron body, combination of screened suction inlet and soft sealing disc check valve. Raised face flanges.

STANDARD & DESIGN:

End Standard	EN 1092-2
Remark	Connection: PN10
Min temperature	-10°C
Max temperature	+120°C
Throughput Direction	Straight
End Type	Flanged
Standard	DIN
Material Seat	EPDM
Material Disc	Cast Iron
Material Body	Cast Iron
Sub Category	CHECK
Item Number	60-00000746
Category	Valve
Mesh size	5 mm



No	Part	Material	Code	Application
1	Body	Cast Iron	GG25	Cargo oil
2	Bonnet	Cast Iron	GG25	Flammable hydraulic oil
3	Disc	Cast Iron	GG25	Fuel oil
4	Basket	Stainless Steel	1.4301	Lubricating oil
5	Disc ring	EPDM		Sea water
6	Bonnet Gasket	EPDM		Water

DN	Pressure Rating Id	nxdd	Hcd	Ø D	Kg	H
100	10	8x18	180	220	23	315

