



PISTON CHECK VALVE 3/4" PN40

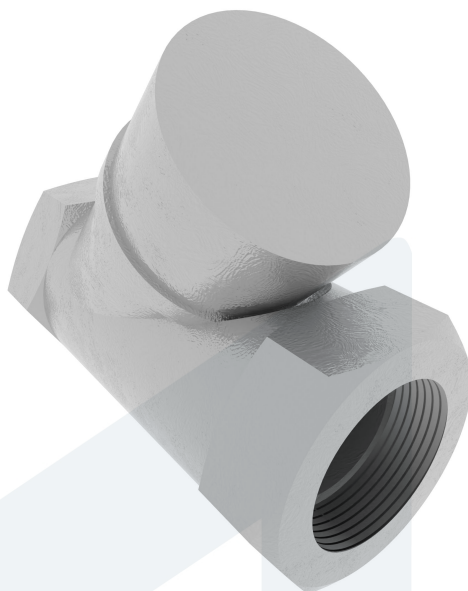
Y-type

60-00000772
471494

DESCRIPTION: Y-type, Stainless Steel body, spring loaded lift check valve with PTFE soft sealing. Screwed cap. BSPP female threaded ends.

STANDARD & DESIGN:

Other Information	Opening pressure max 0,3 Bar
End Standard	ISO 228-1
Face To Face Standard	EN 16722
Remark	Opening pressure max 0,3 Bar
Min temperature	0°C
Max temperature	+180°C
Throughput Direction	Y-type
End Type	Threaded
Standard	DIN
Material Seat	PTFE
Sub Category	CHECK
Item Number	60-00000772
Category	Valve



No	Part	Material	Code	Application
1	Body	Stainless Steel	-	Air
2	Cap	Stainless Steel	-	Boiler feedwater
3	Disc	Stainless Steel	-	Cargo oil
4	Gasket	PTFE		Condensate
5	Seal	PTFE		Flammable hydraulic oil
6	Spring	Stainless Steel	-	Fuel oil
				Gas
				Lubricating oil
				Non-flammable hydraulic fluid
				Sea water
				Steam
				Thermal oil
				Water

DN	Pressure Rating Id	L	Kg	Inch	H	Ø A	B
20	40	75.7	0.4	3/4"	44,6	18	32.3

