



# PISTON CHECK VALVE 1" PN40

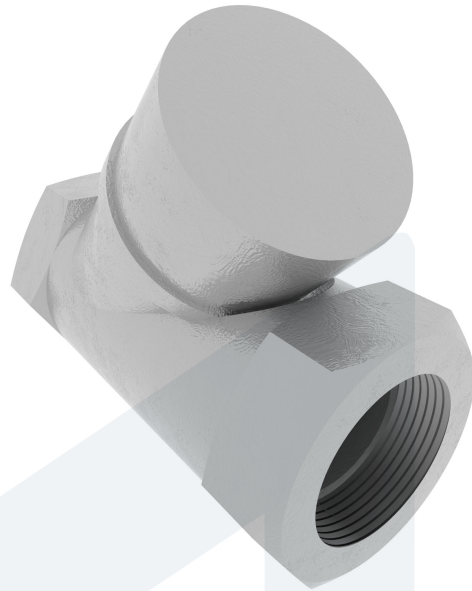
Y-Check Valve 1" PN40

60-00000773  
471494

**DESCRIPTION:** Y-type, Stainless Steel body, spring loaded lift check valve with PTFE soft sealing. Screwed cap. BSPP female threaded ends.

## STANDARD & DESIGN:

Other Information	Opening pressure max 0,3 Bar
End Standard	ISO 228-1
Face To Face Standard	EN 16722
Min temperature	0°C
Max temperature	+180°C
Throughput Direction	Y-type
End Type	Threaded
Standard	DIN
Material Seat	PTFE
Sub Category	CHECK
Item Number	60-00000773
Category	Valve



No	Part	Material	Code	Application
1	Body	Stainless Steel	-	Air
2	Cap	Stainless Steel	-	Boiler feedwater
3	Disc	Stainless Steel	-	Cargo oil
4	Gasket	PTFE		Condensate
5	Seal	PTFE		Flammable hydraulic oil
6	Spring	Stainless Steel	AISI 316	Fuel oil
				Gas
				Lubricating oil
				Non-flammable hydraulic fluid
				Sea water
				Steam
				Thermal oil
				Water

DN	Pressure Rating Id	L	Kg	Inch	H	Ø A	B
25	40	89.7	0.7	1"	56,9	23.5	41

