

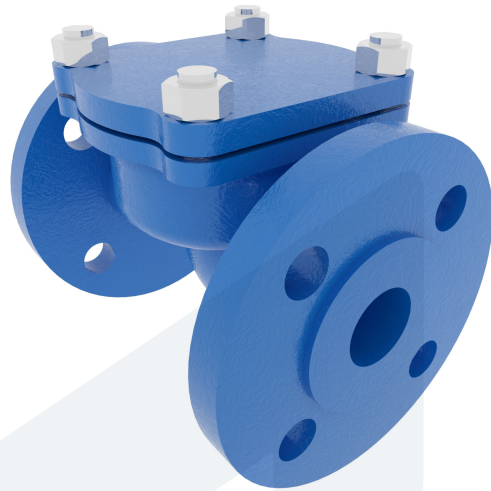


# LIFT CHECK VALVE DN50 PN16 60-0000932 472002

**DESCRIPTION:** Nodular Cast Iron body, metal seated spring loaded lift check valve. Raised face flanges.

**STANDARD & DESIGN:**

End Standard	EN 1092-2
Face To Face Standard	EN 558, series 1
Remark	Connection: PN16
Min temperature	-10°C
Max temperature	+180°C
Throughput Direction	Straight
End Type	Flanged
Design Code	DIN 86252
Standard	DIN
Material Seat	Stainless Steel, 420
Material Disc	Stainless Steel, 420
Material Body	Nodular Cast Iron, GGG40.3
Sub Category	CHECK
Item Number	60-0000932
Category	Valve



No	Part	Material	Code	Application
1	Body	Nodular Cast Iron	GGG40.3	Boiler feedwater
2	Bonnet	Nodular Cast Iron	GGG40.3	Cargo oil
3	Seat	Stainless Steel	1.4021	Condensate
4	Disc	Stainless Steel	1.4021	Flammable hydraulic oil
5	Bonnet Gasket	Graphite	CrNi	Fuel oil
6	Spring	Spring Steel	1.4057	Lubricating oil
				Non-flammable hydraulic fluid
				Sea water
				Steam
				Water

DN	Pressure Rating Id	nxdd	Hcd	Ø D	L	Kg	H
50	16	4x18	125	165	230	10	85

