



# KNIFE GATE VALVE DN50 PN10

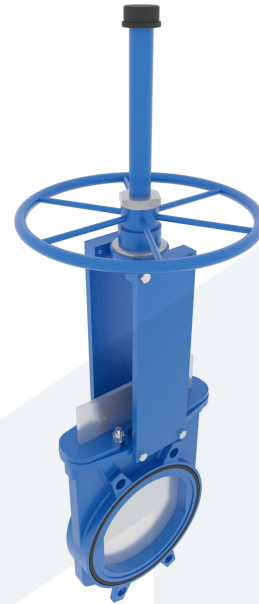
130-00000003  
396851

Wafer type - bidirectional

**DESCRIPTION:** Wafer type, Cast Iron body, EPDM soft sealed knife gate valve.

**STANDARD & DESIGN:**

End Standard	EN 1092-2
Remark	Connection: PN10
Throughput Direction	Straight
End Type	Wafer
Standard	DIN
Material Seat	EPDM
Material Disc	Stainless Steel, 304
Material Body	Cast Iron
Sub Category	GATE
Item Number	130-00000003
Category	Valve



No	Part	Material	Code	Application
1	Body	Cast Iron	GG25	Boiler feedwater
2	Seat	EPDM		Cargo oil
3	Knife	Stainless Steel	AISI 304	Condensate
4	Packing gland	Cast Iron	GGG50	Flammable hydraulic oil
5	Packing	PTFE		Fuel oil
6	O-ring seal	EPDM		Lubricating oil
7	Support plates	Steel		Sea water
8	O-ring	Nitrile		Water
9	Stem	Stainless Steel	AISI 303	
10	Stem nut	Bronze		
11	Nut	Steel		
12	Yoke	Steel		
13	Handwheel	Nodular Cast Iron		
14	Hood	Steel		

DN	Pressure Rating Id	nxdd	Hcd	L	Kg	L1	H	H1	H2	Ø M	P
50	10	4xM16	125	40	7	92	409	63	280	225	8

