



GATE VALVE DN300 PN6/PN10

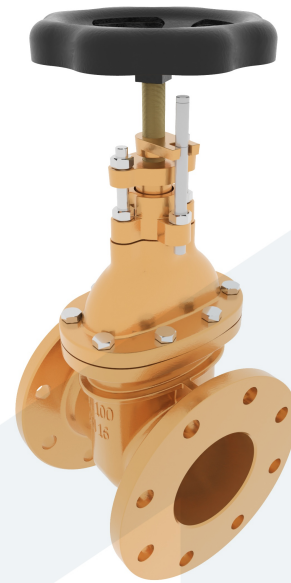
130-00000131
401521

With indicator

DESCRIPTION: RG5 body gate valve, RG5 wedge and seats. Non rising stem with open/close indicator and bolted bonnet. Flat face flanges.

STANDARD & DESIGN:

End Standard	EN 1092-3
Face To Face Standard	EN 558, series 14
Remark	Connection: PN10
Min temperature	-10°C
Max temperature	+120°C
Throughput Direction	Straight
End Type	Flanged
Design Code	EN 12288
Standard	DIN
Material Seat	Bronze
Material Disc	Bronze
Material Body	Bronze
Sub Category	GATE
Item Number	130-00000131
Category	Valve



No	Part	Material	Code	Application
1	Body	Bronze	CC491K	Boiler feedwater
2	Bonnet	Bronze	CC491K	Cargo oil
3	Wedge	Bronze	CC491K	Condensate
4	Seats	Bronze	CC491K	Flammable hydraulic oil
5	Stem	Brass	CW710R	Fuel oil
6	Bonnet gasket	Asbestos Free		Lubricating oil
7	Gland packing	PTFE		Non-flammable hydraulic fluid
8	Indicator	Bronze	CC491K	Sea water
9	Handwheel	Cast Iron	GG25	Steam
				Thermal oil
				Water

DN	Pressure Rating Id	nxdd	Hcd	Ø D	L	Kg	H	Ø M
300	6	12x22	400	445	270	155	790	315

