



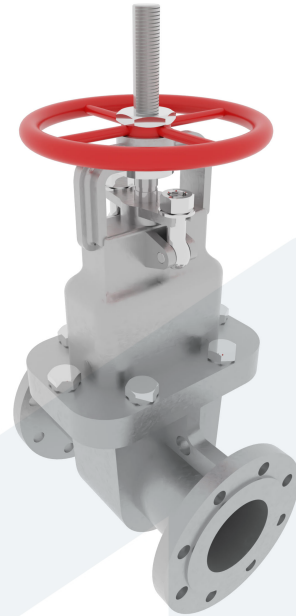
# GATE VALVE DN50 PN16

130-00000546  
621792

**DESCRIPTION:** Stainless Steel body gate valve, Stainless Steel wedge. Rising stem and bolted bonnet. Raised face flanges.

**STANDARD & DESIGN:**

|                       |                      |
|-----------------------|----------------------|
| End Standard          | DIN 2633             |
| Face To Face Standard | EN 558, series 14    |
| Inspection Standard   | EN 12266             |
| Remark                | Connection: PN16     |
| Throughput Direction  | Straight             |
| End Type              | Flanged              |
| Design Code           | ASME B16.34          |
| Standard              | DIN                  |
| Material Disc         | Stainless Steel, 316 |
| Material Body         | Stainless Steel, 316 |
| Sub Category          | GATE                 |
| Item Number           | 130-00000546         |
| Category              | Valve                |



| No | Part          | Material        | Code   | Application                   |
|----|---------------|-----------------|--------|-------------------------------|
| 1  | Body          | Stainless Steel | 1.4408 | Air                           |
| 2  | Bonnet        | Stainless Steel | 1.4408 | Boiler feedwater              |
| 3  | Gland         | Stainless Steel | 1.4308 | Cargo oil                     |
| 4  | Wedge         | Stainless Steel | 1.4408 | Condensate                    |
| 5  | Stem          | Stainless Steel | SUS316 | Corrosive fluids              |
| 6  | Bonnet gasket | PTFE            |        | Flammable hydraulic oil       |
| 7  | Gland packing | PTFE            |        | Fuel oil                      |
| 8  | Stem bushing  | PTFE            |        | Gas                           |
| 9  | Yoke sleeve   | Bronze          |        | Lubricating oil               |
| 10 | Handwheel     | Cast Iron       | FCD    | Non-flammable hydraulic fluid |
|    |               |                 |        | Sea water                     |
|    |               |                 |        | Steam                         |
|    |               |                 |        | Thermal oil                   |
|    |               |                 |        | Water                         |

| DN | Pressure Rating Id | nxdd | Hcd | Ø D | L   | Kg   | H   | Ø M |
|----|--------------------|------|-----|-----|-----|------|-----|-----|
| 50 | 16                 | 4x18 | 125 | 165 | 150 | 11.6 | 330 | 200 |

