



GLOBE VALVE DN32 PN16

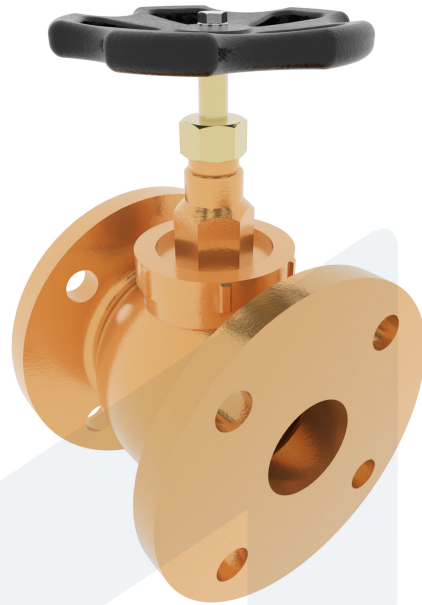
150-0000221
456322

Straight type - SDNR

DESCRIPTION: Straight type, RG5 body, metal seated globe valve with rising stem. Screwed and secured bonnet. Flat face flanges.

STANDARD & DESIGN:

End Standard	EN 1092-3
Remark	Connection: PN16
Min temperature	-10°C
Max temperature	+200°C
Throughput Direction	Straight
Variant	SDNR
End Type	Flanged
Standard	DIN
Material Disc	Bronze
Material Body	Bronze
Sub Category	GLOBE
Item Number	150-0000221
Category	Valve



No	Part	Material	Code	Application
1	Body	Bronze	RG5	Boiler feedwater
2	Bonnet	Bronze	RG5	Condensate
3	Gland	Brass	Ms58	Flammable hydraulic oil
4	Disc	Bronze	RG5	Fuel oil
5	Stem	Special Brass	Som59	Lubricating oil
6	Bonnet nut	Bronze	RG5	Sea water
7	Gland nut	Brass	Ms58	Steam
8	Packing	Graphite		Water
9	Gasket	PTFE		
10	Handwheel	Cast Iron	GG25	

DN	Pressure Rating Id	nxdd	Hcd	Ø D	L	Kg	H	Ø M
32	16	4x18	100	140	105	5	130	90

