



# GLOBE VALVE DN40 PN16

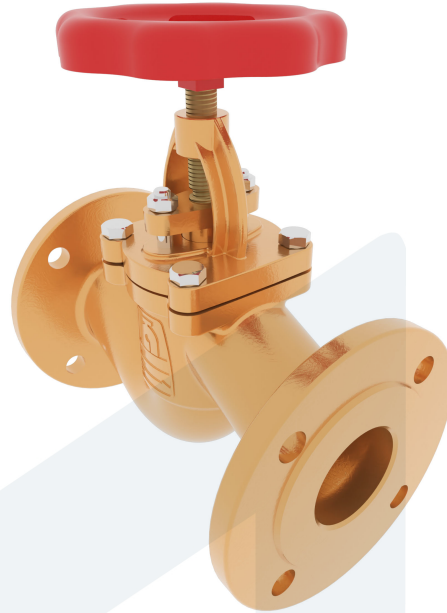
150-00000318  
458822

Straight type - SDNR with spring

**DESCRIPTION:** Straight type, RG5 body, metal seated globe valve with rising stem. Bolted bonnet. Raised face flanges.

**STANDARD & DESIGN:**

|                       |                  |
|-----------------------|------------------|
| End Standard          | EN 1092-3        |
| Face To Face Standard | EN 558, series 1 |
| Remark                | Connection: PN16 |
| Throughput Direction  | Straight         |
| Variant               | SDNR with spring |
| End Type              | Flanged          |
| Standard              | DIN              |
| Material Disc         | Bronze           |
| Material Body         | Bronze           |
| Sub Category          | GLOBE            |
| Item Number           | 150-00000318     |
| Category              | Valve            |



| No | Part      | Material          | Code    | Application             |
|----|-----------|-------------------|---------|-------------------------|
| 1  | Body      | Bronze            | CC 491K | Boiler feedwater        |
| 2  | Bonnet    | Bronze            | CC 491K | Cargo oil               |
| 3  | Gland     | Bronze            | CC 491K | Condensate              |
| 4  | Disc      | Bronze            | CC 491K | Flammable hydraulic oil |
| 5  | Stem      | Brass             | CW 602N | Fuel oil                |
| 6  | Gasket    | Dixo 4000         |         | Lubricating oil         |
| 7  | Packing   | Graphite          |         | Sea water               |
| 8  | Handwheel | Nodular Cast Iron | GGG40   | Steam                   |
| 9  | Spring    | Stainless Steel   | 1.4404  | Water                   |

| DN | Pressure Rating Id | nxdd | Hcd | Ø D | L   | Kg | H   | Ø M |
|----|--------------------|------|-----|-----|-----|----|-----|-----|
| 40 | 16                 | 4x18 | 110 | 150 | 200 | 7  | 195 | 140 |

