



# GLOBE VALVE DN20 JIS 5K

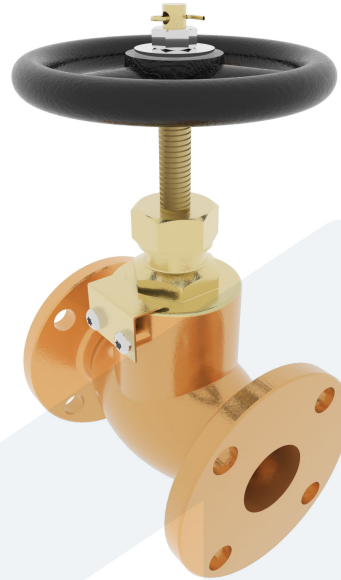
150-00001647  
F-7301

Straight type - SDSL

**DESCRIPTION:** Straight type, RG5 body, metal seated globe valve with rising stem. Screwed and secured bonnet. Flat face flanges.

**STANDARD & DESIGN:**

End Standard	JIS B2240
Inspection Standard	JIS F7400
Remark	Connection: JIS 5K
Throughput Direction	Straight
Variant	SDSL
End Type	Flanged
Design Code	JIS F7301
Standard	JIS
Material Disc	Brass
Material Body	Bronze
Sub Category	GLOBE
Item Number	150-00001647
Category	Valve



No	Part	Material	Code	Application
1	Body	Bronze	BC 6	Boiler feedwater
2	Bonnet	Brass	C 3771 BE	Condensate
3	Gland	Brass	C 3771 BE	Flammable hydraulic oil
4	Disc	Brass	C 3771 BE	Fuel oil
5	Stem	Brass	C 3771 BE	Lubricating oil
6	Gland nut	Brass	C 3771 BE	Sea water
7	Packing	Graphite		Steam
8	Handwheel	Cast Iron	FC 200	Water

DN	Pressure Rating Id	nxdd	Hcd	Ø D	L	Kg	H	Ø M
20	5	4x12	65	85	110	2.9	140	100

