



GLOBE VALVE DN50 JIS 16K

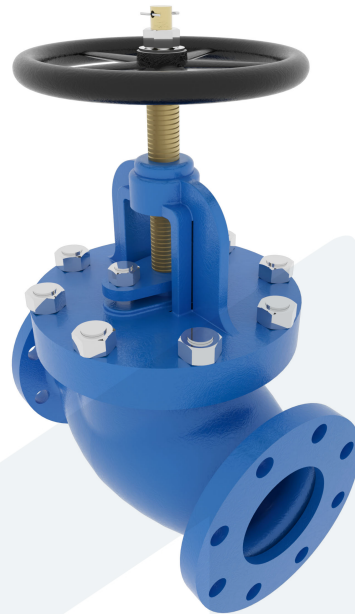
150-00001734
F-7309

Straight type - SDSL

DESCRIPTION: Straight type, Cast Iron body, metal seated globe valve with rising stem. Bolted bonnet. Flat face flanges.

STANDARD & DESIGN:

End Standard	JIS B2239
Inspection Standard	JIS F7400
Remark	Connection: JIS 16K
Throughput Direction	Straight
Variant	SDSL
End Type	Flanged
Design Code	JIS F7309
Standard	JIS
Material Seat	Bronze
Material Disc	Bronze
Material Body	Cast Iron
Sub Category	GLOBE
Item Number	150-00001734
Category	Valve



No	Part	Material	Code	Application
1	Body	Cast Iron	HT200	Cargo oil
2	Bonnet	Cast Iron	HT200	Flammable hydraulic oil
3	Gland	Brass	H62	Fuel oil
4	Disc	Bronze	ZCuSn5Pb5Zn5	Lubricating oil
5	Stem	Brass	H62	Sea water
6	Gasket	Graphite		Water
7	Packing	Graphite		
8	Sealing ring	Bronze	ZCuSn5Pb5Zn5	
9	Handwheel	Cast Iron	HT200	

DN	Pressure Rating Id	nxdd	Hcd	Ø D	L	Kg	H	Ø M
50	16	8x19	120	155	220	19.6	285	160

