



GLOBE VALVE DN50 JIS 20K

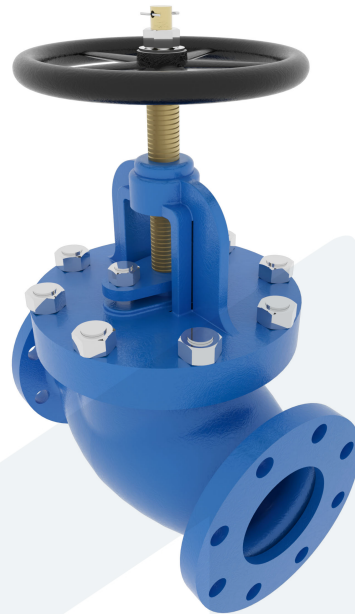
150-00001773
F-7313

Straight type - SDSL

DESCRIPTION: Straight type, Cast Steel body, metal seated globe valve with rising stem. Bolted bonnet. Flat face flanges.

STANDARD & DESIGN:

End Standard	JIS B2220
Inspection Standard	JIS F7400
Remark	Connection: JIS 20K
Throughput Direction	Straight
Variant	SDSL
End Type	Flanged
Design Code	JIS F7313
Standard	JIS
Material Seat	Stainless Steel, 420
Material Disc	Stainless Steel, 420
Material Body	Cast Steel
Sub Category	GLOBE
Item Number	150-00001773
Category	Valve



No	Part	Material	Code	Application
1	Body	Cast Steel	ZG230-450	Boiler feedwater
2	Bonnet	Cast Steel	ZG230-450	Cargo oil
3	Gland	Stainless Steel	2Cr13	Condensate
4	Disc	Stainless Steel	2Cr13	Flammable hydraulic oil
5	Stem	Stainless Steel	2Cr13	Fuel oil
6	Gasket	Graphite		Lubricating oil
7	Packing	Graphite		Non-flammable hydraulic fluid
8	Sealing ring	Stainless Steel	2Cr13	Water
9	Handwheel	Cast Iron	HT200	

DN	Pressure Rating Id	nxdd	Hcd	Ø D	L	Kg	H	Ø M
50	20	8x19	120	155	230	21.6	305	200

