



GLOBE VALVE DN15 JIS 16K

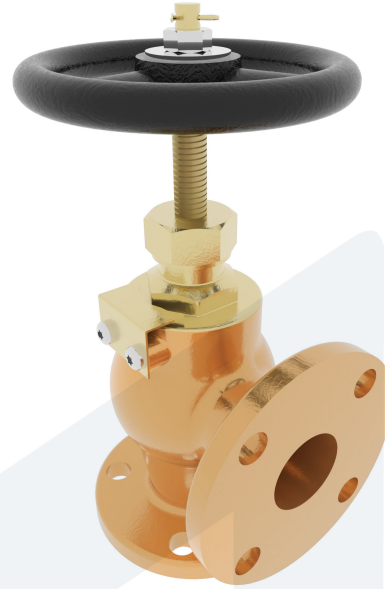
Angled type - SDNR

150-00001917
F-7410

DESCRIPTION: Angled type, RG5 body, metal seated globe valve with rising stem. Screwed and secured bonnet. Flat face flanges.

STANDARD & DESIGN:

End Standard	JIS B2240
Inspection Standard	JIS F7400
Remark	Connection: JIS 16K
Throughput Direction	Angled
Variant	SDNR
End Type	Flanged
Design Code	JIS F7304
Standard	JIS
Material Disc	Brass
Material Body	Bronze
Sub Category	GLOBE
Item Number	150-00001917
Category	Valve



No	Part	Material	Code	Application
5	Stem	Brass	C 3771 BE	Boiler feedwater
6	Gland nut	Brass	C 3771 BE	Condensate
7	Packing	Graphite		Flammable hydraulic oil
8	Handwheel	Cast Iron	FC 200	Fuel oil
1	Body	Bronze	BC 6	Lubricating oil
2	Bonnet	Brass	C 3771 BE	Sea water
3	Gland	Brass	C 3771 BE	Steam
4	Disc	Brass	C 3771 BE	Water

DN	Pressure Rating Id	nxdd	Hcd	Ø D	L	Kg	H	Ø M
15	16	4x15	70	95	70	2.7	120	80

